



130 West 56th Street  
New York, NY 10019

Phone: (212) 247-0430  
Fax: (212) 246-9778

**General Information**  
and  
**Technical Information**  
October 19, 2017

**CONTENTS**

General Information ----- 3

Emergency Phone Numbers ----- 4

Crew & Load In Area ----- 5

Carpentry ----- 6

Lighting ----- 9

Sound ----- 12

Video ----- 15

Props ----- 16

Wardrobe ----- 17

Management ----- 18

Dressing Rooms ----- 19

Stage & Orchestra Pit Drawings ----- 25



## New York City Center *Technical Information*

### **GENERAL INFORMATION**

**Address** New York City Center, Administrative Office  
130 West 56th Street (between 6th and 7th Avenues)  
New York, NY 10019

Stage entrance is on 56th Street.  
Stage Loading Door is 130 W. 56<sup>th</sup> Street.  
Box office and lobby entrances are on 55th Street.  
(between 6th and 7th Avenues)

**Phone & Fax** Administration Phone: (212) 247-0430  
Administration Fax: (212) 246-9778

<b>Hall Seating Capacity</b>	Orchestra	608
	Grand Tier	209
	Mezzanine	617
	Balcony	752
	Orchestra Pit Seats	71
	<b>Maximum Capacity</b>	<b>2,257</b>

<b>Personnel</b>	Mark Litvin, Managing Director	
	Mark Mongold, Dir. of Production	<a href="mailto:mmongold@nycitycenter.org">mmongold@nycitycenter.org</a>
	Andrey Shenin, Dir. of Operations	<a href="mailto:ashenin@nycitycenter.org">ashenin@nycitycenter.org</a>
	Aubrey Ball, Studio Manager	<a href="mailto:aball@nycitycenter.org">aball@nycitycenter.org</a>
	Emily Hare, House Manager	<a href="mailto:ehare@nycitycenter.org">ehare@nycitycenter.org</a>
	John Toguville, Box Office Treasurer	<a href="mailto:jtoguville@nycitycenter.org">jtoguville@nycitycenter.org</a>

<b>Local One Dept. Heads</b>	Gerry Griffin, Head Carpenter	<a href="mailto:ggriffin@nycitycenter.org">ggriffin@nycitycenter.org</a>
	Evan Vorono, Head Electrician	<a href="mailto:evorono@nycitycenter.org">evorono@nycitycenter.org</a>
	Jim McWilliams, Property Master	<a href="mailto:jmcwilliams@nycitycenter.org">jmcwilliams@nycitycenter.org</a>

**Box Office** All ticket information (212) 581-1212 (CityTix)

### **Directions by Public Transportation**

By subway:

<b>N R Q W</b>	57th Street and 7th Avenue
<b>F</b>	57th Street and 6th Avenue
<b>B D E</b>	53rd Street and 7th Avenue
<b>A C 1</b>	59th Street (Columbus Circle)

By bus:

<b>M1, 2, 3, 4</b>	55th Street and 5th Avenue
<b>M5</b>	59th Street and 6th Avenue
<b>M7</b>	56th Street and 7th Avenue
<b>M10</b>	55th Street and Broadway
<b>M104</b>	57th Street and Broadway

**Access for Disabled** 56th street access via stage loading door to stage (see Load-In Area).  
55th street access via ramp.

**New York City Center *Technical Information***

**Emergency Numbers**

**Dial 911 for all Emergency Services.**

**New York City Center Security (24 hours) Tel: (212) 763-1200**

New York City Police, Midtown North Precinct  
306 West 54<sup>th</sup> Street  
New York, NY 10019  
(212) 767-8400

New York City Fire Department, Headquarters  
9 Metrotech Center  
Brooklyn, NY  
(718) 999-2000

St. Luke's – Roosevelt Hospital Center  
1000 Tenth Avenue at 59<sup>th</sup> Street  
New York, NY  
Admitting: (212) 523-6400  
Patient Information: (212) 523-3558

**For area Hotel or Restaurant information please contact Director of Operations**

**UNION CREW**

New York City Center operates under the jurisdiction of IATSE Local One. The needs of the attraction, together with the conditions of the Local One Agreement (available upon request), will dictate total crew required. There is a mandated 8 person basic crew consisting of Head Carpenter, Assistant Carpenter, Flyman, Head Electrician, Assistant Electrician, Sound, Head Props, and Assistant Props.

Trucks are unloaded to the sidewalk by **Teamsters**, with the number of teamsters determined by truck size. Attractions must make arrangements for the Teamster call with the New York City Center Production Manager.

**LOAD-IN AREA**

The main load-in access is an inclined (no steps) 40'-0" (12.19m) indoor ramp from 56th Street to the stage. Trucks can park on 56<sup>th</sup> street and equipment can be unloaded to street level (New York City Center has one truck ramp), then to stage via the ramp. Ramp door dimensions are 5'-6" (1.68m) wide by 9'-6" (2.90m) high.

There is also a loading door on 56th Street 5'-6" (1.68m) above sidewalk level but trucks cannot back up to it as they will block the street and sidewalk. Objects can be lifted up and passed in. The loading dock door is arched and is 8'-0" (2.44m) wide by 12'-0" (3.66m) high at center.

**CARPENTRY**

**Stage Dimensions**

<b>Proscenium Opening</b>	45'-0" (13.72m) wide x 26'-6" (8.08m) high
<b>Standard Opening</b>	Approximately 40'-0" (12.19m) wide x 23'-0" (7.01m) high
<b>Depth</b>	42'-7" (12.98m) – US smoke pocket to upstage wall
<b>Grid Height</b>	59'-9" (18.21m) (12" Flat Truss Pipes, max out trim to top chord 57'-9" Max out trim to bottom chord 56'-9")
<b>Wing Space</b>	<b>Stage Right</b> wing space extends 39'-0" (13.72m) beyond proscenium edge. There is a 30'-0" x 45'-0" (9.14m x 13.72m) clear floor area with a clear ceiling height of 27'-0" (8.23m). See attached stage plan for location of obstructing columns. <b>Stage Left</b> wing space extends 7' (2.13m) beyond proscenium edge. Fly rail is operated from the floor stage left.
<b>Stage Height</b>	3'-4" (1.02m) above house floor at first row of Orchestra section.
<b>Crossover</b>	Hallway runs from USR to USL behind stage area. Onstage crossover is possible, between last line set and upstage wall approximately 3'-0" (.91m) wide with minor obstructions from pipes on back wall. An under stage crossover is also available via a spiral staircase.

**Stage Floor**

Stage is multi-layer basket weave sprung floor. Stage and wings are covered with permanent black Harlequin Cascade dance floor. Screwing or lagging into the deck is not permitted. A plywood overlay floor is available upon request should it be necessary. Consult with NYCC Production Manager if required.

## New York City Center *Technical Information*

### **Orchestra Pit Lift**

The orchestra pit is 45'-0" (13.7m) wide by 11'-7" (3.6m) deep at center. The pit floor is comprised of a motorized platform that is 43'-6" (13.26m) wide by 11'-7" (3.6m) deep at center and two fixed plugs on either side. The motorized platform can be raised or lowered between stage level and 8'-4" (2.54m) below stage level. The fixed plugs can be legged at various heights. There is space for additional musicians that extends 11'-5" (3.48m) US, under the stage with clearance. This additional space is at the same height as the platform at its lowest level. The orchestra pit floor can also be set to accommodate additional house seating. Consult Production Manager for further information.

### **House Drapery**

**House Curtain** Wine-colored, guillotine only curtain, manually operated from stage right; center split allows paging.

<b>Split Black</b>	(1)	2 piece Black Drop	60'x30'
<b>Borders</b>	(5)	Black Borders	50'x12'
	(2)	Black Borders	50'x2'-6"
<b>Legs</b>	(6)	Black Legs	13'x30'
	(4)	Black Legs	13'x35'
	(10)	Black Legs	5'x35'
<b>Scrim</b>	(1)	Black Scrim	50'x30'
	(1)	Black Scrim	50'x30'
	(1)	Blue Bobbinette Scrim	50'x30'
	(1)	Blue Scrim	50'x30'
	(1)	White Scrim	50'x30'
	(1)	Off White Scrim	50'x30'
<b>Full Stage Black</b>	(3)	Full Black Drop	50'x30'
	(1)	Fiber Optic Star Drop	50'x30'

**Other House Drapery** (1) Plastic RP screen 50' w x 30' h (15.24m x 9.14m )  
 (1) White muslin bounce 50' w x 30' h (15.24m x 9.14m)  
 Note: This is not seamless and not suitable for backing by itself

Other misc. black masking goods that may be available. Please contact Production Manager.

### **Show Scenery**

Scenery brought in by an attraction must be flame proofed to meet NYC Fire Department regulations. Please submit copies of current flameproof certification to the Production Manager at least 2 weeks prior to load in.

## New York City Center *Technical Information*

### Line Set Data

**Working Heights** High trim 57'-9" (17.60m) to top chord of 12" flat truss pipes  
High trim 56'-9" (17.60m) to bottom chord of 12" flat truss pipes  
Deck to underside of sprinklers just below grid: 59'-0"  
Low trim 5'-4" (1.63m) to top chord of truss pipes  
Low trim 4'-4" (1.32m) to bottom chord or truss pipes

**Total Line Sets** 91 single purchase counterweight

**Arbor Capacity** 800 lbs. (362.9 kg) per arbor (20 Lead weights)

**Length of Pipes** 50'-0" (15.24m)

**Diameter of Pipes** 1.5" (3.8cm) ID (2" (5cm) OD) sched 40 steel pipes  
on top and bottom of 12" Flat Truss

**Pin Rail** Locking rail for counterweight sets located on the floor stage left. Loading bridge located on stage left gallery. Pin rail for spotted hemp sets available stage left and right on galleries.

**Available Weight** 9,421 lbs (4,282.3 kg) of Steel counterweight  
9,670 lbs. (4,395.5 kg) of Lead counterweight  
Total of 19,091 lbs. (8,677.7kg)

**Line Plot** Available separately. ***Note: Electrics may need 2 line sets married together for counter weight capacity.***

**Shop Area** There is a small wood working shop under the stage right wing area that is accessible via freight elevator.

**Storage** Stage right wing space.

**Platforms** Various sizes available; list available upon request.

**Chain Motors** Six 1 ton CM - chain motors available for use over stage.



**LIGHTING**

<b>Power</b>	Two 120/208V 3 phase 5-wire 400A/leg switches located downstage right; total 800A @ 120V feeding stage dimmers system and company switches								
<b>Dimmers</b>	672 @ 20 amp; 24 @ 50 amp (lighting system is dimmer per circuit)								
<b>Control</b>	ETC EOS control console with back up and misc. video nodes and designer tech table screens. Located in booth in the Rear Mezzanine. ETC Net throughout building with network to DMX nodes available.								
<b>House Lights</b>	Separate Paradigm system, dimmable at light board location								
<b>Circuits</b>	<p>Over stage circuiting system is a flexible arrangement of multi-cable and breakouts running primarily from stage right gallery.</p> <p>Front of house (FOH) positions are wired with permanent circuits: 36@20 amp and 3@50 amp on Balcony rail; 36@20 amp and 3@50 amp on Grand Tier (low) rail; 18@20 amp and 1@50amp each in box booms left and right.</p> <p>All connectors are 3-pin stage connectors.</p>								
<b>FOH Transfer</b>	84 FOH 20 amp and 8 @ 50 amp FOH circuits are accessible by transfer panel located downstage right. All connectors are 3-pin stage connector.								
<b>FOH Positions</b>	<p>Throw length/angle to head-height of a 5'-6" (1.68m) person standing at plaster line on center:</p> <table><tr><td>Balcony rail (Upper Rail) center</td><td>55' (16.76m)/29°</td></tr><tr><td>Grand Tier/Mezzanine rail (Lower Rail) center</td><td>32' (9.75m)/9°</td></tr><tr><td>Box booms left and right top</td><td>38' (11.58m)/23°</td></tr><tr><td>Follow spot booth</td><td>114' (34.75m)/34°</td></tr></table>	Balcony rail (Upper Rail) center	55' (16.76m)/29°	Grand Tier/Mezzanine rail (Lower Rail) center	32' (9.75m)/9°	Box booms left and right top	38' (11.58m)/23°	Follow spot booth	114' (34.75m)/34°
Balcony rail (Upper Rail) center	55' (16.76m)/29°								
Grand Tier/Mezzanine rail (Lower Rail) center	32' (9.75m)/9°								
Box booms left and right top	38' (11.58m)/23°								
Follow spot booth	114' (34.75m)/34°								
<b>FOH Instruments</b>	FOH instruments may be moved during load-in but must be restored at load-out.								

**Balcony Rail (Upper Rail)**

- (30) ETC Source Four 19° with color extenders
- (20) ETC Source Four 10° (Barrels only)
- (24) ETC Source Four 14° (Barrels only)

**Grand Tier/Mezzanine Rail (Lower Rail)**

- (2) ETC Source Four Par WFL, L106 (curtain warmers)
- (2) ETC Source Four Par MFL, L106 (curtain warmers)

**Box Booms**

- (8) ETC Source Four 19° (4 each left and right) with color extenders
- (20) ETC Source Four 26° (10 each left and right) with color extenders

## New York City Center *Technical Information*

### Stage Instruments

- (45) ETC Source Four 19°
- (115) ETC Source Four 26°
- (135) ETC Source Four 36°
- (40) ETC Source Four 50°
- (18) 8" 1500W Altman Fresnels
- (18) 6.9" ARRI Studio Fresnels 1000W
- (70) PAR64 1000W w/ various VNSP, NSP, MFL, WFL lamps  
(contact Director of Production for current lamp stock)
- (15) ETC Source Four PAR w/ VNSP, NSP, MFL, WFL lenses avail
- (8) PAR 64 MFL 500W 9 light, 3 circuit striplights 7'-2" (2.18m)
- (10) R40 300W FL 15 light, 3 circuit striplights 8'-0" (2.44m)
- (10) Altman FarCyc units 1000W, 3 circuit 4'-5" (1.35m)
- (8) MR 16 EYC (flood) 75W 30-light, 3 circuit striplights  
6'-6" (1.98m)
- (12) ETC MultiPAR-12 Strips 575W 12-light, 3 or 4 circuit striplights  
8'-6" (2.45m) w/ VNSP, NSP, MFL, WFL lenses and flipper
- (4) ETC MultiPAR-3 Strips 575W 3-light, 3 circuit striplights  
2'-4" (0.71m) w/ VNSP, NSP, MFL, WFL lenses and flipper
- (5) 9'-4" (2.84m) T-3 500W 12-light 3 circuit Ground Row striplights

**Footlights** Apron trough can accommodate 5 MR 16 strips

**Followspots** (3) 3000W Xenon Lycian 1293 in Spot Booth (back of 2nd balcony)

<b>Color Frame Sizes</b>	ETC Source Four 10°	12" x 12" (30.5 cm x 30.5 cm)
	ETC Source4 14°	7.5" x 7.5" (19.05cm x 19.05cm)
	ETC Source Four 19°-50°	6-1/4" x 6-1/4" (15.8 cm x 15.8 cm)
	8" Fresnel	10" x 10" (25.4cm x 25.4cm)
	6.9" ARRI Fresnel	9" (22.9cm) diameter circle
	PAR 64	10" x 10" (25.4cm x 25.4cm)
	PAR 64 strip	8 3/4" x 9 1/2" (22.2 cm x 24.1cm)
	R40 strip	5 3/4" x 6 3/4" (14.6 cm x 17.1cm)
	Far-Cyc	15 1/2" x 16" (39.4 cm x 40.6 cm)
	Followspot	9" (22.9 cm) diameter circle
	MR16 Strip	3 1/4" x 4 3/4" (8.3 cm x 11.9 cm)
	ETC MultPAR Strip	7 1/2" x 7 1/2" (19.05 cm x 19.05 cm)
	T-3 Ground Row Strip	8 3/4" x 13" (22.25 cm x 33 cm)

**Ladders & Lifts**

- (2) Genie-lift, reaches 40' (12.19m)
- (1) 12' ladder, fiberglass
- (2) 8' ladders, fiberglass
- (4) 6' ladders, fiberglass
- (2) 4' ladder, fiberglass
- (4) 3' ladder, aluminum

## New York City Center *Technical Information*

### Booms

- (8) 16'-0" (4.9m) boom towers.  
Each tower will hold ten (10) ETC Source Four units on 19"(48.3 cm) centers. An eleventh (11) unit may be mounted on top. Each tower consists of two sections. A single section may be used as an 8'-0" (2.4m) tower.
- (6) Rolling stands, adjustable from 5'-0" (1.83m) to 8'-0" (2.74m)
- (4) Rolling stands, adjustable from 3'-0" (1.10m) to 5'-0" (1.83m)
- (8) 50 lb. bases (1 1/2" pipe)
- (7) 25 lb. bases (1 1/2" pipe)  
1-1/2" pipe, couplings, and cheseboros available for 4'-0" (1.2m) to 21'-0" (5.5m) booms, goal posts, etc.

### Sidearms

- (60) 12" (30.5cm) single-tee
- (50) 18" (45.7cm) single-tee
- (4) 24" (61.0cm) single-tee

### Other Hardware

- (29) 24" (61.0cm) diameter full bumpers
- (2) Half bumpers
- (59) Hanging irons for striplights
- (36) Trunions (26 for cyc and Par strips, 10 for MR 16 strips)
- (20) Barndoors for 8" Fresnels or PAR 64
- (18) Arri barndoors for Arri Fresnels
- (100) Source 4 color extenders
- (31) Half hats
- (20) 10° top hats

**Cable** Approximately 4000' available in various lengths

### Pyrotechnics & Open Flame

Any use of pyro or open flame, cigarettes, flash paper, flash pots, etc. requires a permit from the NYC Fire Department. At least three weeks notice prior to load in is required to get the proper permit. Please consult Production Manager for more information. FDNY Fee Applies.

**SOUND**

**Mix Location** Sound Mix position located in rear center of the orchestra level seating section. The house Studer sound console is not movable, contact Director of Production if a road console position is required.

**Mixing Consoles** Studer Vista 5 Digital Mixing Console (42 fader)  
568 in x 472 out; analog and digital with Dante interface  
TiMax Sound Hub II system matrix 48 x 48

**Production Communication** Six-channel Clearcom system hard wired to all production areas.  
(Dual power supplies)  
(8) HME Pro 850 wireless intercom (8 wireless belt packs)  
(4) Clear-com RM-440 4 channel remote stations  
(6) 2 channel belt boxes RS 502  
(10) Single channel belt boxes RS501  
(24) Headsets (Beyer DT108 / Telex PH-88)  
(4) Speaker Stations  
(3) Clearcom HS-6 Handset  
(1) TW-12B interface  
(1) TW-40 Radio interface  
(1) CC-22 8 channel RTS to Clearcom interface

**FOH Speakers**

**Center Cluster** (12) d&b audiotechnik J12  
(1) d&b audiotechnik J12 SUB

**Stereo System** (6) d&b audiotechnik C7 (Main L&R Orch)  
(2) d&b audiotechnik B2 (Subs L&R Orch)  
(2) d&b audiotechnik B4 (Subs L&R Orch)

**Delays & Under Balcony** (5) d&b audiotechnik E6 (Orch Delay)  
(2) d&b audiotechnik E12 (Fill L&R Orch)  
(14) d&b audiotechnik E0 (L&R Mezz)  
(2) d&b audiotechnik T10  
(6) d&b audiotechnik Q1 (Balcony Delay)

**Front Fill** (5) d&b audiotechnik E3

**Orch Fill** (2) d&b E0 & E12

**Monitors** (6) d&b audiotechnik E12  
(4) d&b audiotechnik E8  
(2) d&b audiotechnik M6  
(5) d&b audiotechnik E0  
(3) d&b audiotechnik D6 amplifiers  
(3) d&b audiotechnik D12 amplifiers  
(6) Hotspot speakers  
(8) Apogee SSM  
(3) Ashley 4 ch amps  
(2) Anchor AN1000X self powered speakers

## **New York City Center** *Technical Information*

### **Microphones**

- (1) AKG D112
- (1) AKG 414
- (2) AKG 416 clip on
- (2) AKG 418 clip on
- (1) AKG 535
- (6) AKG 451 preamps with:
  - 4 with CK1 cardioid capsules
  - 1 with CK5 hyper cardioid capsule
  - 2 with CK9 long shotgun capsule
  - 1 with CK8 shotgun capsule
- (15) AKG blue line SE300b preamps with CK91 cardioid capsule:
  - 5 with A91 Swivel
  - 10 with AKG VR 92 tubes for 300b
- (1) Audix I5
- (2) Audix D-1
- (2) Audix D-2
- (2) Audix D-4
- (1) Audix D-6
- (1) Heil PR-31B
- (1) AT 4050
- (2) AT 815B Shotguns
- (1) Barcus Berry Piano Pick-up
- (2) Countryman Iso-Max cardioid lavalier
- (6) Crown PCC 160
- (3) Crown PZM 30 RB
- (2) Crown CM700
- (5) Electrovoice 408B
- (6) Earthworks Flex 2-FM360, 2-FM500, 2-FM720
- (4) Schoeps CMC6/MK4
- (2) Telefunken M60
- (2) Sennheiser 518
- (2) Sennheiser K3-U preamps with:
  - 1 ME40 hypercardioid capsule
  - 2 ME80 cardioid capsule
- (1) Shure SM 57
- (6) Shure SM58
- (6) Shure Beta SM 57
- (6) Shure Beta SM 58
- (4) Shure Beta SM 87A
- (2) Shure Beta SM 181
- (2) Shure Beta SM 98
- (1) Shure Beta SM 91A
- (2) Shure 58 with switch
- (1) Shure 408 with switch
- (7) Active DI boxes (4 type 85, 2 Hot box, 1 J48)
- (1) Radial JDI stereo DI box
- (2) Astatic CTM1500

### **Audio Interfaces**

USB, TRS, RCA DI boxes

## **New York City Center** *Technical Information*

<b>Wireless</b>	(2)	Sennheiser EW 550 G3 receiver
	(2)	SKM 500 me865 handheld
	(2)	Sennheiser wireless handheld EW100 (for VOG Director talkback microphone)
	(14)	Sennheiser sk5212 body pack transmitters with Sennheiser 3532 receivers (mke 2 lavs)
<b>Stands</b>	(75)	MS12 Microphone stands
	(35)	MS25 Microphone stands
	(5)	Tripod Stands
	(30)	DMS10E (banquet stands)
	(6)	DMS7 (desk stands)
	(75)	Boom Arms
	****	Assorted Mic hardware
<b>Playback</b>	(2)	Denon CD Players C640
	(2)	Denon Media Players F300
	(1)	QLAB sound effects/playback system 8 CH (redundant system of two Mac Minis)
<b>Signal Processors</b>	(2)	TC 4000 reverbs
	(4)	Lexcion FX engines internal (to Studer)
<b>Wiring</b>		XLR Patch panel in amp room cross connects to all audio circuits
	(650)	Balanced XLR lines from stage & FOH positions W2 56 pair from FOH mix position & SR to patch room Analog, AES, XLR, MIDI, CAT6 lines from FOH to patch room
	(48)	UTP CAT5 4pr lines
<b>Cable</b>		XLR, Speakon, AC (consult Production Manager with your specific needs)
<b>XLR Multi</b>		6, 12, & 19 pair (Wireworks AMP G block), W2 56 pair
<b>Power</b>		Company switch (sound) and house sound system powered by 400 Amps 3 phase 5 wire with isolated ground and in-line isolation transformer
		Company switches stage right 100amp 3 phase camlock under stage 100amp 3 phase camlock
<b>Hearing Assist System</b>		4 Channel FM (RF) listening system
<b>Paging System</b>		Page system and show program to all backstage areas and dressing room tower.

## New York City Center *Technical Information*

### VIDEO

Lobby system for stage program and Digital HD content. This is an MATV/Digital sign player system of 8 HDTV monitors in the lobby spaces to display the stage picture for latecomer audience members. These monitors are also available to display other recorded content before and after shows and during intermissions.

A lobby "video art wall" is available to display content. An extra fee for the digital installation potentially applies, please contact Production Manager.

Video/Audio archive available, fee applies, please consult Production Manager.

<b>Cameras</b>	<b>(1)</b>	Stage picture Sony model BRC-2700 (HD3CMOS Stage View)
	<b>(1)</b>	IR Stage Picture
	<b>(1)</b>	Sony B& W #SSCM183
	<b>(1)</b>	Elmo PTZ Camera
<b>Monitors</b>	<b>(2)</b>	20" LCD hung on Mezz rail for conductor picture for actors
	<b>(2)</b>	15" Sony ViewSonic (MATV) at Stage Manager's desk
	<b>(1)</b>	22" Sony HD LCD (MATV) at Stage Manager's desk
	<b>(1)</b>	8" Sony Color CRT for conductor picture at Stage Manager's desk
	<b>(1)</b>	17" LCD (for lighting cue sheet) at Stage Manager's desk
	<b>(1)</b>	42" Sony HD Projection TV (MATV) in Green Room
	<b>(2)</b>	9" Panasonic B&W CRT
	<b>(1)</b>	9" Sony Color CRT
	<b>(2)</b>	13" Sony Color CRT
	<b>(1)</b>	27" Sony Color CRT
<b>Video Feeds</b>	(MATV monitors can receive Stage SD [Standard Definition], Stage HD, Stage IR, Conductor, Truck Feed)	
	<b>(80)</b>	Video lines to and from orchestra and mezzanine lobbies, stage positions, orchestra pit, sound booth, lighting booth, follow spot booth, mezzanine and balcony rails, and trap in 56 <sup>th</sup> Street sidewalk for truck hookup.
<b>Playback/Record</b>	<b>(1)</b>	Panasonic DMR-E100H DVD video recorder
	<b>(1)</b>	Panasonic DVD-S53 DVD/CD multi format player
<b>Cables to Sidewalk</b>	<b>(13)</b>	TRIAx to under stage
	<b>(3)</b>	DT12 12 pair audio mults to audio patch room
	<b>(20)</b>	BNC HDSDI video lines to under stage
	<b>(8)</b>	CAT6 data lines to audio patch room
	<b>(1)</b>	25 pair Telco line to telephone room

Dark fiber is available in an adjacent building through Verizon. There are eight HDSDI video lines and two 12-pair AES audio XLR multis run from the understage area to the Verizon room. Contact Director of Production for more information.

**New York City Center** *Technical Information*

**PROPS**

**Ballet Barres** (3) ballet barres 10'-0" long

**Harlequin Cascade (Blk)** (6) panels 6'-7" (2m) x 42'-0" this can be used in addition to the permanent Harlequin Cascade

**Chairs** (8) Tall Stools (30")  
(8) Medium Stools (24")  
(8) Short Stools (18")  
(30) Folding chairs available  
(90) Black Fabric Upholstered chairs

**Folding Tables**

(1) 8'-0"  
(10) 6'-0"  
(4) 5'-0"  
(4) 4'-0"

**Stands** (50) music stands

**Stand lights** (80) stand lights; dimmers available

**Podium** (1) conductor's podium and stand, adjustable and lit

**Platforms** Assorted small platforms

**Lecterns** (2) Dark Cherry Wood lecterns, non-adjustable

**Pianos** (1) Yamaha U5PE Upright Piano  
(1) Yamaha 7ft CF6 Grand Piano



**WARDROBE**

**Wardrobe Area**    Separate wardrobe room located on the second floor

- (2)    Irons
- (2)    Ironing boards
- (2)    Steamers
- (1)    Sewing Machine
- (4)    Washers and dryers and 1 large sink located in the laundry room  
on the second floor across from the wardrobe room
- (20)    6' (1.83m) high x 7' (2.13m) long rolling racks

**Quick Change Booths**    Quick change booths set up as needed stage left and stage right  
(Limited space available stage left, check plan drawing)

*New York City Center Technical Information*

**MANAGEMENT**

**Production Room** Various dressing rooms, the Green Room, the Wardrobe area, and other possible production office spaces are equipped with phone jacks and network lines. Please consult New York City Center Production Manager if you wish to utilize any phone lines.

**Green Room** Green Room is located on the third floor of the dressing room tower.

**Stage Manager's Desk** Located downstage right with four video monitors (displaying stage, conductor, IR stage, and light board display), intercom system, paging microphone, and cue light switches. House curtain is also operated from downstage right.

**Rehearsal Rooms** Rehearsal studios are available but must be scheduled in advance with the Studio Manager.

**Restrooms** Restrooms and showers available on every level of the dressing room tower. There is one handicap accessible unisex restroom located in the crossover hallway backstage.

**DRESSING ROOMS**

Dressing Rooms are located on floors 2 through 6 of the backstage tower, off stage left.

Floors 2 through 5 each have 3 small star dressing rooms which hold 2 to 4 people each. Large chorus dressing rooms are on the 2<sup>nd</sup> floor and the 6<sup>th</sup> floor. Total dressing room space available for approximately 80 people.

Access to dressing rooms is available by both stairs and an elevator.

There is additional dressing space and lockers for 45 musicians in a room under the stage accessible to the Orchestra Pit, called the Robing Room. See mini-ground plans at the end of this document.

New York City Center *Technical Information*

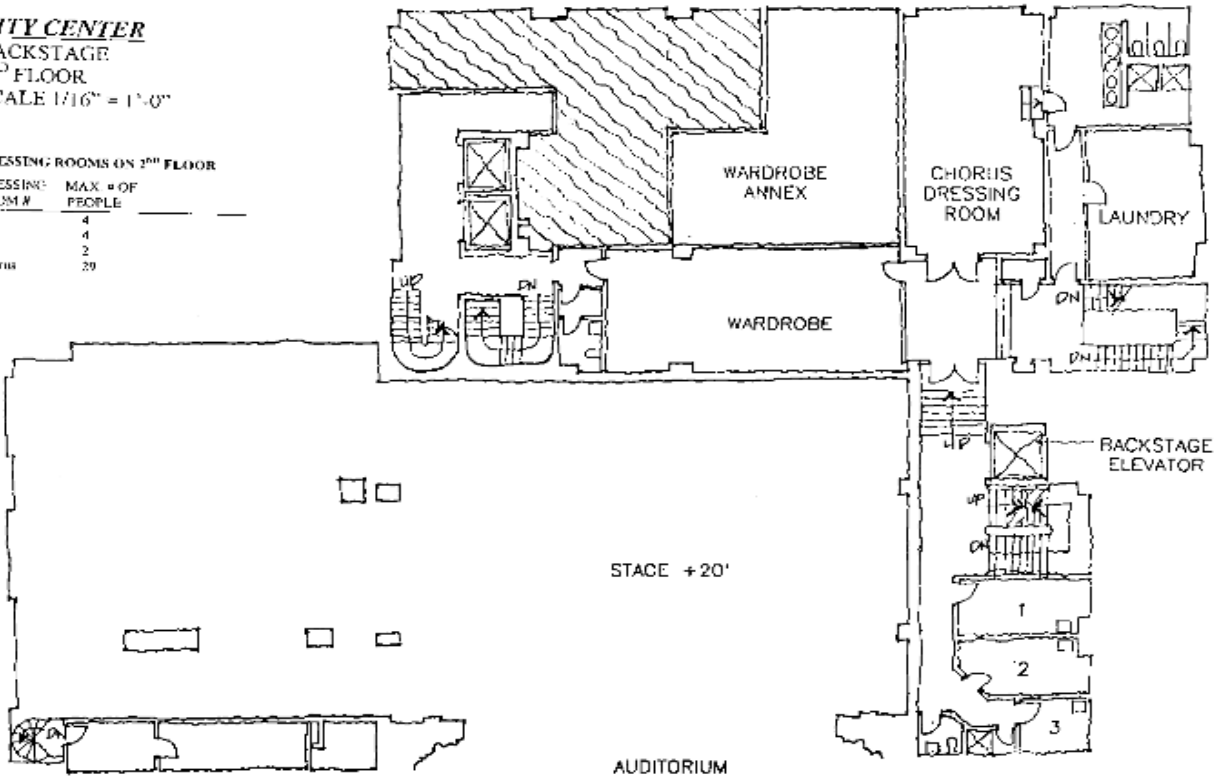
Dressing Rooms on Second Floor:

Room #	Max # People
1	4
2	4
3	2
Chorus Rm	29

**CITY CENTER**  
BACKSTAGE  
2<sup>ND</sup> FLOOR  
SCALE 1/16" = 1'-0"

DRESSING ROOMS ON 2<sup>ND</sup> FLOOR

DRESSING ROOM #	MAX # OF PEOPLE
1	4
2	4
3	2
Chorus	29



New York City Center *Technical Information*

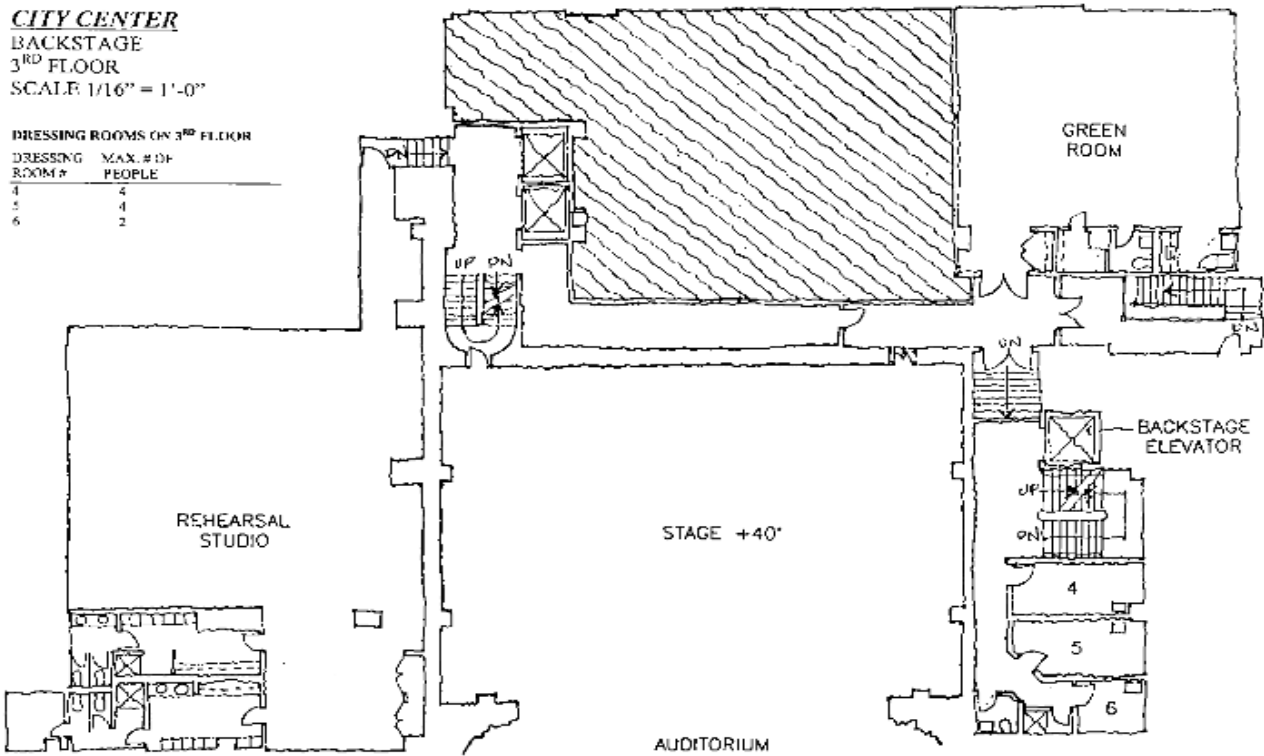
Dressing Rooms on Third Floor:

Room #	Max # People
4	4
5	4
6	2

**CITY CENTER**  
BACKSTAGE  
3<sup>RD</sup> FLOOR  
SCALE 1/16" = 1'-0"

DRESSING ROOMS ON 3<sup>RD</sup> FLOOR

DRESSING ROOM #	MAX. # OF PEOPLE
4	4
5	4
6	2



New York City Center *Technical Information*

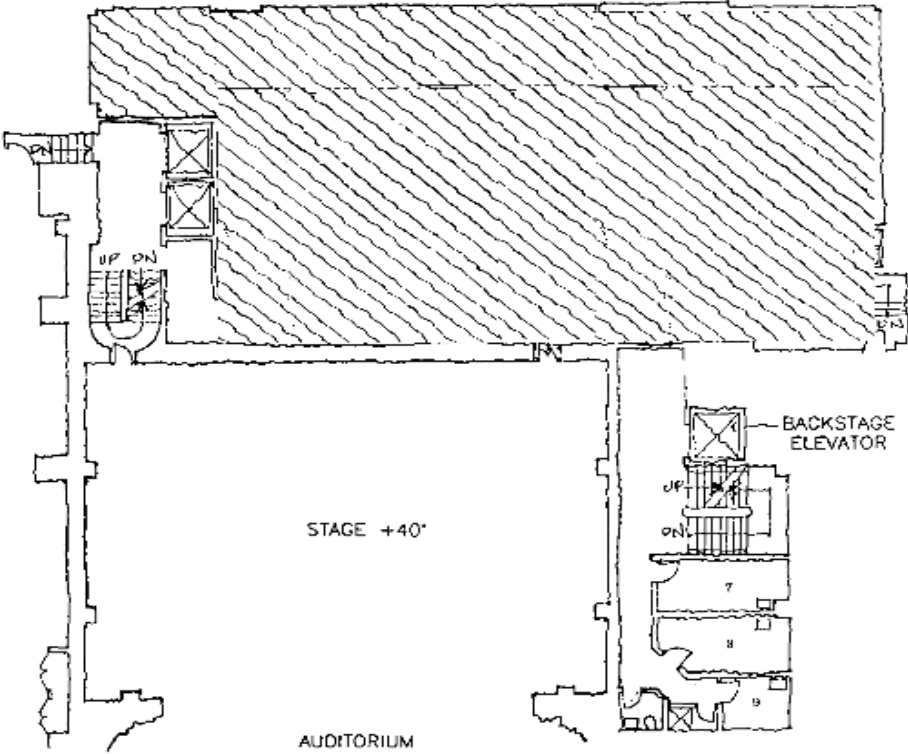
Dressing Rooms on Fourth Floor:

Room #	Max # People
7	4
8	4
9	2

**CITY CENTER**  
BACKSTAGE  
4<sup>TH</sup> FLOOR  
SCALE: 1/16" = 1'-0"

DRESSING ROOMS ON 4<sup>TH</sup> FLOOR

DRESSING ROOM #	MAX. # OF PEOPLE
7	4
8	4
9	2



New York City Center *Technical Information*

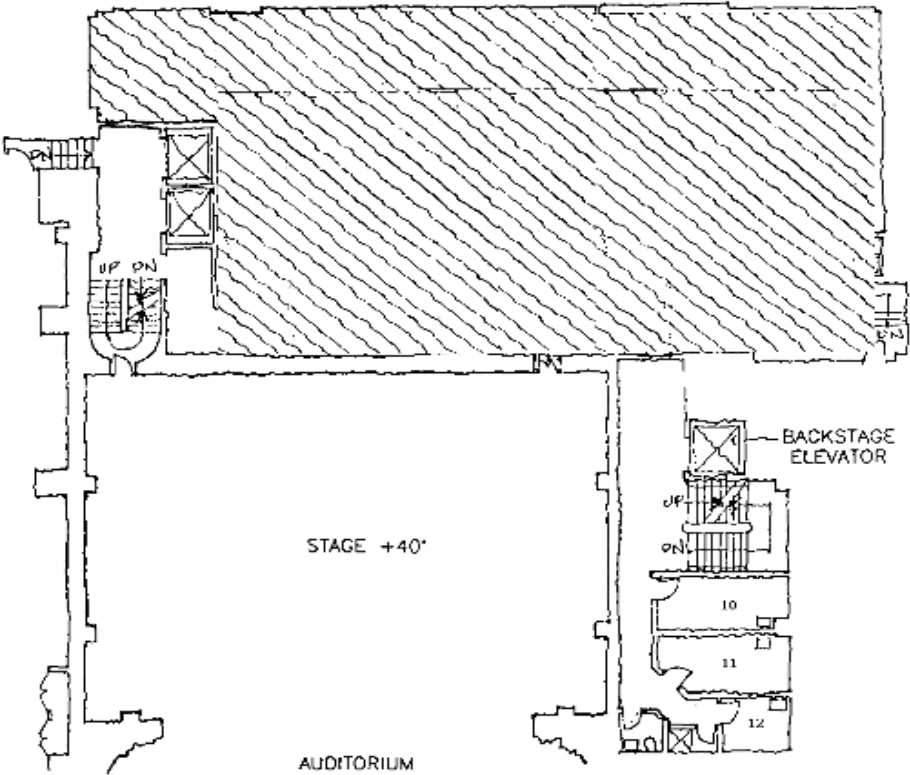
Dressing Rooms on Fifth Floor:

Room #	Max # People
10	4
11	4
12	2

**CITY CENTER**  
BACKSTAGE  
5<sup>TH</sup> FLOOR  
SCALE 1/16" = 1'-0"

DRESSING ROOMS ON 5<sup>TH</sup> FLOOR

DRESSING ROOM #	MAX. # OF PEOPLE
10	4
11	4
12	2



New York City Center *Technical Information*

Dressing Rooms on Sixth Floor:

Room #	Max # People
Chorus	15

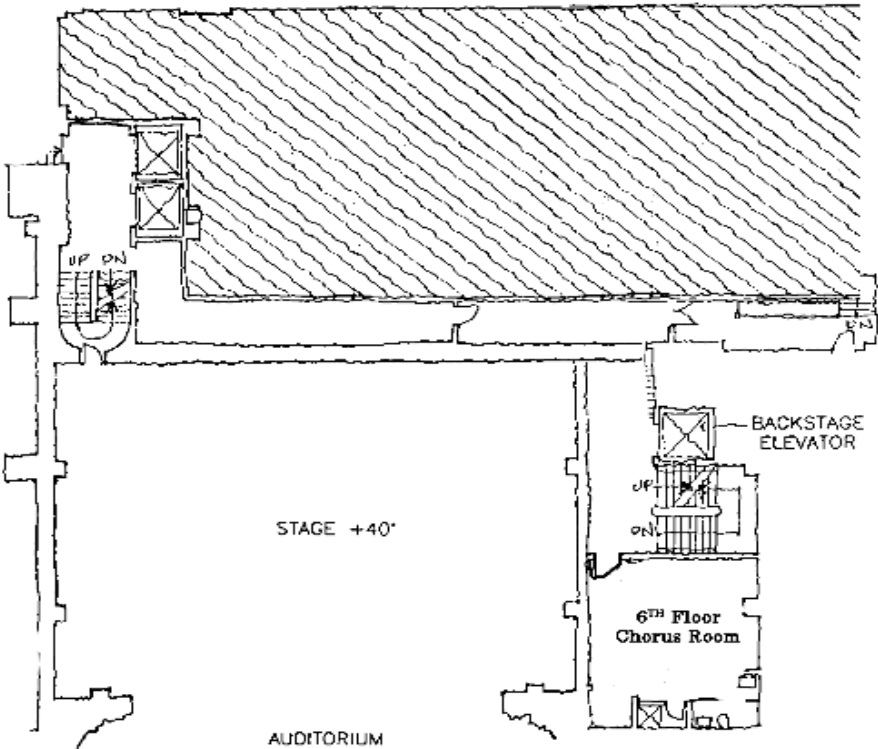
**CITY CENTER**  
BACKSTAGE  
6<sup>TH</sup> FLOOR  
SCALE 1/16" = 1'-0"

DRESSING ROOMS ON 6<sup>TH</sup> FLOOR

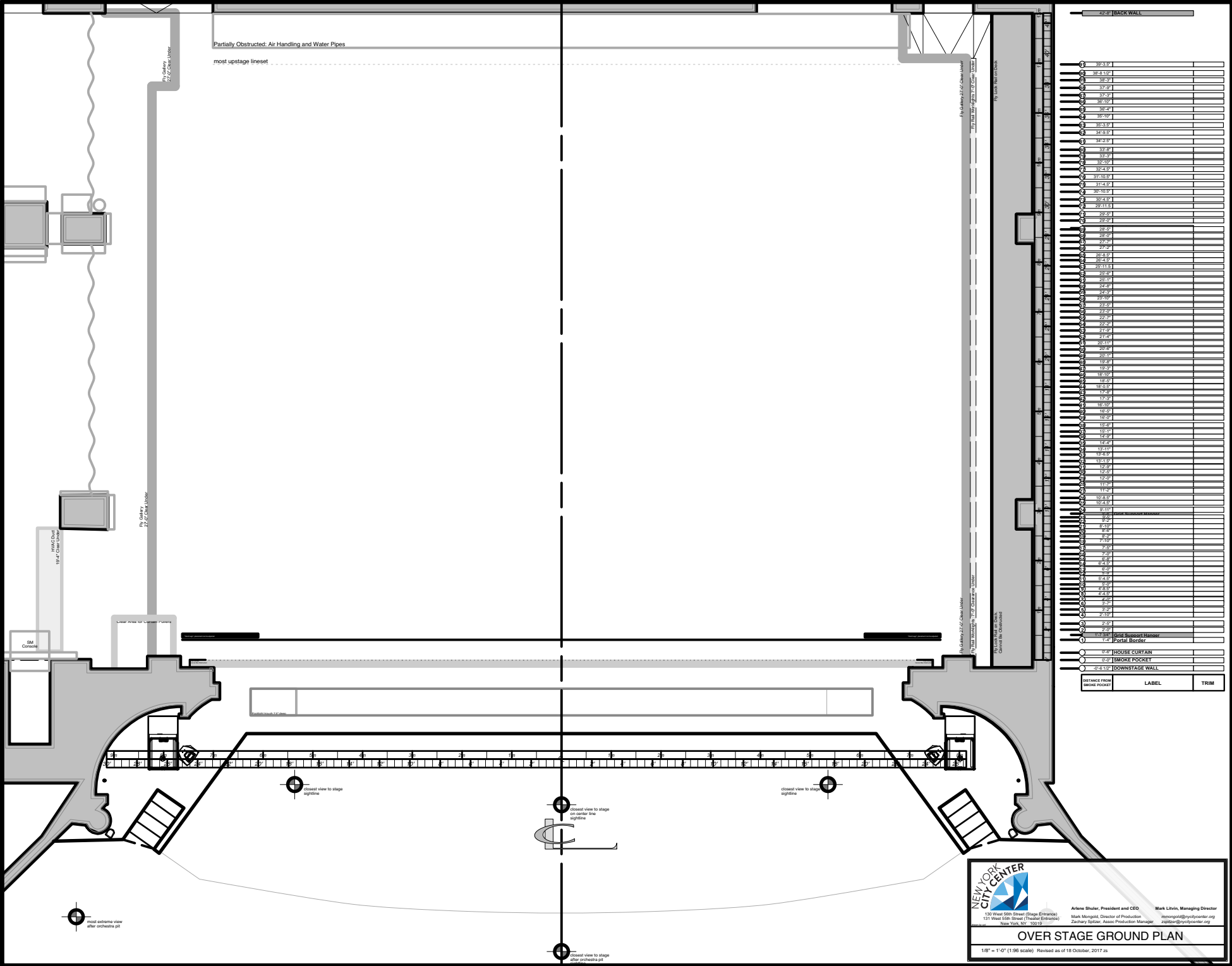
DRESSING ROOM #	MAX. # OF PEOPLE
-----------------	------------------

THE 6 <sup>TH</sup> FLOOR	15 people
---------------------------	-----------


Chorus Dressing Room







12'-0" BACK WALL		
1	39'-3.3'	
2	38'-8.1/2"	
3	38'-5"	
4	37'-5"	
5	37'-3"	
6	36'-10"	
7	35'-10"	
8	35'-3.3'	
9	34'-8.5"	
10	34'-3.5"	
11	33'-7"	
12	32'-10"	
13	31'-4.8"	
14	31'-10.5"	
15	31'-4.8"	
16	30'-10.5"	
17	30'-4.8"	
18	29'-11.5"	
19	29'-5"	
20	28'-5"	
21	28'-0"	
22	27'-5"	
23	27'-0"	
24	26'-4.8"	
25	26'-4.8"	
26	25'-11.5"	
27	25'-4"	
28	24'-4"	
29	24'-0"	
30	23'-10"	
31	23'-0"	
32	22'-4"	
33	22'-0"	
34	21'-4"	
35	20'-10"	
36	20'-5"	
37	20'-0"	
38	19'-4"	
39	19'-0"	
40	18'-10"	
41	18'-5"	
42	18'-0.5"	
43	17'-4"	
44	17'-0"	
45	16'-10"	
46	16'-5"	
47	16'-0"	
48	15'-11"	
49	15'-4.5"	
50	15'-1.5"	
51	14'-11"	
52	14'-8"	
53	14'-4"	
54	14'-0"	
55	13'-11"	
56	13'-8"	
57	13'-4"	
58	13'-0"	
59	12'-8"	
60	12'-4"	
61	12'-0"	
62	11'-8"	
63	11'-4"	
64	11'-0"	
65	10'-8"	
66	10'-4"	
67	10'-0"	
68	9'-8"	
69	9'-4"	
70	9'-0"	
71	8'-8"	
72	8'-4"	
73	8'-0"	
74	7'-8"	
75	7'-4"	
76	7'-0"	
77	6'-8"	
78	6'-4"	
79	6'-0"	
80	5'-8"	
81	5'-4"	
82	5'-0"	
83	4'-8"	
84	4'-4"	
85	4'-0"	
86	3'-8"	
87	3'-4"	
88	3'-0"	
89	2'-8"	
90	2'-4"	
91	2'-0"	
92	1'-8"	
93	1'-4"	
94	1'-0"	
95	0'-8"	
96	0'-4"	
97	0'-0"	
98	0'-0"	
99	0'-0"	
100	0'-0"	



NEW YORK  
CITY CENTER

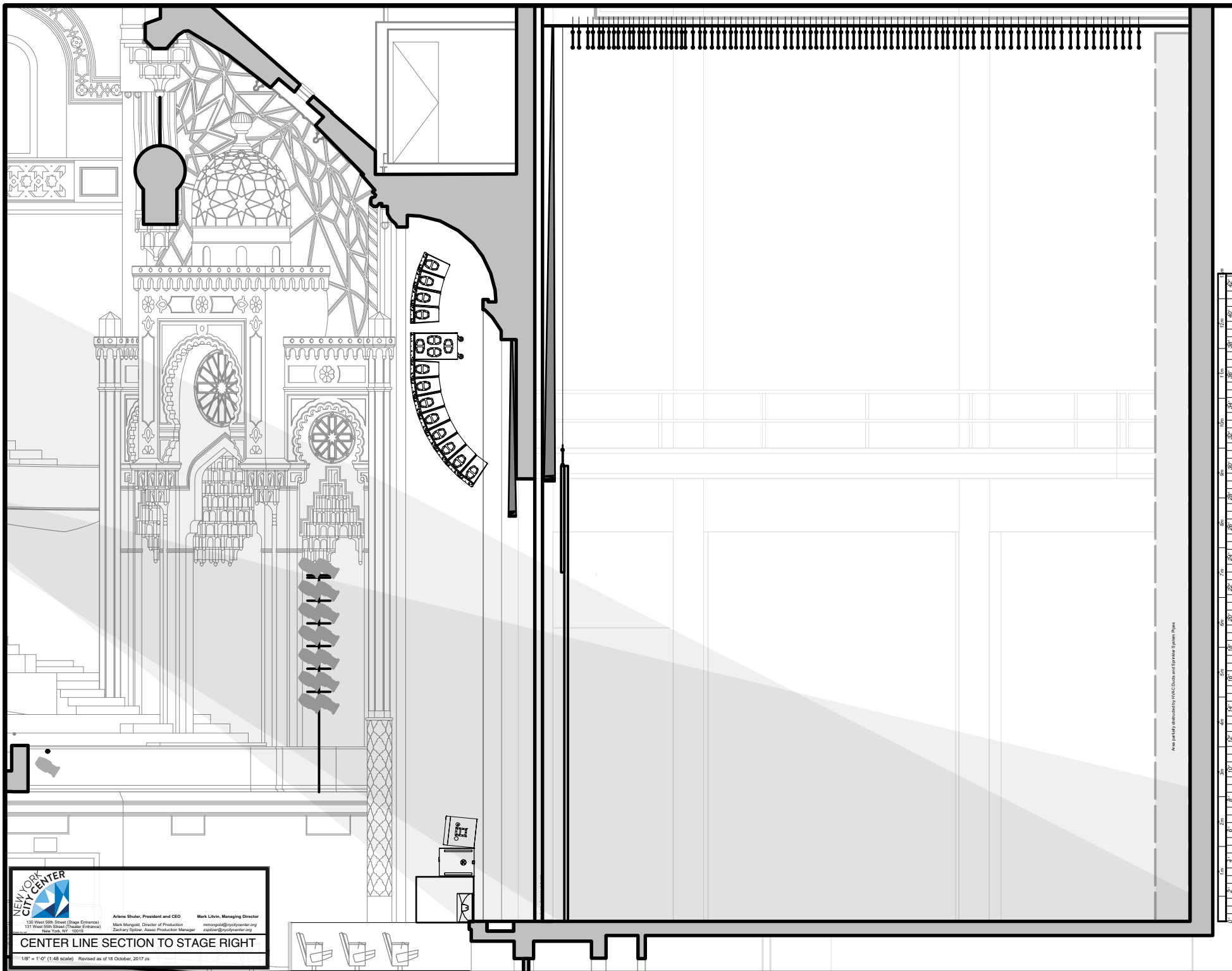
130 West 58th Street (Stage Entrance)  
131 West 60th Street (Theater Entrance)  
New York, NY 10019

Arlene Shuler, President and CEO  
Mark Morgold, Director of Production  
Zachary Uptler, Assoc. Production Manager

Mark Livino, Managing Director  
mmorgold@nyccenter.org  
zuptler@nyccenter.org

**OVER STAGE GROUND PLAN**

1/8" = 1'-0" (1/96 scale) Revised as of 18 October, 2017 as



130 West 58th Street (Stage Entrance)  
131 West 58th Street (Theater Entrance)  
New York, NY 10019

Arturo Shuler, President and CEO

Mark Librin, Managing Director

Mark Librin, Director of Production

Zachary Spiller, Assoc. Production Manager

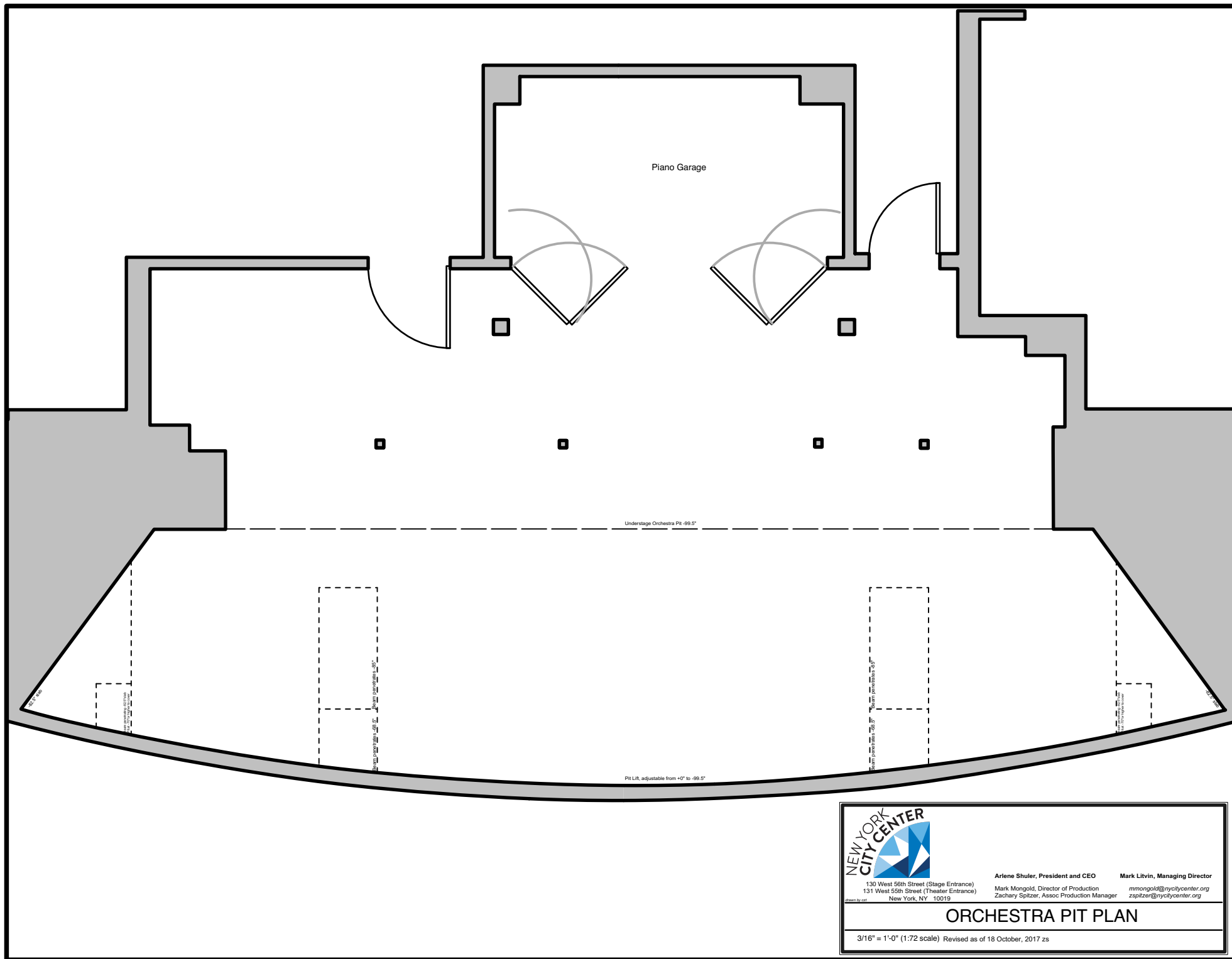
marklibrin@nyccenter.org

zspiller@nyccenter.org

# CENTER LINE SECTION TO STAGE RIGHT

1/8" = 1'-0" (1:48 scale) Revised as of 18 October, 2017 zs

Area partially obscured by HMC Ducts and Sprinkler System Piping





130 West 56th Street (Stage Entrance)  
131 West 55th Street (Theater Entrance)  
New York, NY 10019

**Arlene Shuler, President and CEO**  
Mark Mongold, Director of Production  
Zachary Spitzer, Assoc Production Manager

**Mark Litvin, Managing Director**  
[mmongold@nycitycenter.org](mailto:mmongold@nycitycenter.org)  
[zspitzer@nycitycenter.org](mailto:zspitzer@nycitycenter.org)

**ORCHESTRA PIT PLAN**

3/16" = 1'-0" (1:72 scale) Revised as of 18 October, 2017 zs