

NEW YORK CITY CENTER:
Technical Information



**130 West 56th Street
New York, NY 10019**

Phone: (212) 247-0430

as of April 27, 2022

NEW YORK CITY CENTER *Technical Information*

CONTENTS

GENERAL INFORMATION-----	<u>3</u>
EMERGENCY PHONE NUMBERS -----	<u>4</u>
UNION CREW & LOAD IN AREA-----	<u>5</u>
CARPENTRY-----	<u>6</u>
LIGHTING-----	<u>9</u>
SOUND-----	<u>12</u>
VIDEO -----	<u>15</u>
PROPS -----	<u>16</u>
WARDROBE -----	<u>17</u>
MANAGEMENT -----	<u>18</u>
DRESSING ROOMS -----	<u>19</u>

NEW YORK CITY CENTER *Technical Information*

GENERAL INFORMATION

Address **Administrative Offices, Stage Entrance, and Stage Loading Door**
130 West 56th Street (between 6th and 7th Avenues)
New York, NY 10019

Theater and Box Office
131 West 55th Street (between 6th and 7th Avenues)
New York, NY 10019

Phone (212) 247-0430

Hall Seating Capacity

Orchestra	608
Grand Tier	209
Mezzanine	617
Balcony	752
Orchestra Pit Seats	71
Maximum Capacity	2,257

Personnel Julie Mason Groob, VP & COO

Carlos Dolan, Director of Production & Venue Operations
cdolan@nycitycenter.org

Julie Shelton-Grimshaw, Assistant Director of Production
jshelton@nycitycenter.org

Nadine Love, Assistant Director of Rentals & Venue Operations
nlove@nycitycenter.org

Caroline Conoly, House Manager
cconoly@nycitycenter.org

Tim Thistleton, Technical Director
tthistleton@nycitycenter.org

Sophia Pesetti, Assistant Production Manager
spesetti@nycitycenter.org

Alison Jaruzelski, Production & Rentals Assistant
ajaruzelski@nycitycenter.org

Local One Dept. Heads Gerry Griffin, Head Carpenter
ggriffin@nycitycenter.org

Evan Vorono, Head Electrician
evorono@nycitycenter.org

Justin Malone, Head Properties
jmalone@nycitycenter.org

Box Office (212) 581-1212 (CityTix)

NEW YORK CITY CENTER *Technical Information*

Directions by Public Transportation

By subway:

N R Q W 57th Street and 7th Avenue
F 57th Street and 6th Avenue
B D E 53rd Street and 7th Avenue
A C 1 59th Street (Columbus Circle)

By bus:

M1, 2, 3, 4 55th Street and 5th Avenue
M5 59th Street and 6th Avenue
M7 56th Street and 7th Avenue
M10 55th Street and Broadway
M104 57th Street and Broadway

Accessible Entrances 56th Street access via stage loading door to stage (see Load-In Area section).
55th Street access via ramp.

EMERGENCY PHONE NUMBERS

Dial 911 for all Emergency Services.

New York City Center Security (24 hours)
(212) 763-1200

New York City Police, Midtown North Precinct
306 West 54th Street
New York, NY 10019
(212) 767-8400

New York City Fire Department, Headquarters
9 Metrotech Center
Brooklyn, NY
(718) 999-2000

St. Luke's – Roosevelt Hospital Center
1000 Tenth Avenue at 59th Street
New York, NY
Admitting: (212) 523-6400
Patient Information: (212) 523-3558

For nearby hotel or restaurant information please consult with Production Contact.

NEW YORK CITY CENTER *Technical Information*

UNION CREW

New York City Center (NYCC) operates under the jurisdiction of IATSE Local One. The needs of the attraction, together with the conditions of the Local One Agreement (available upon request), will dictate total crew required. There is a mandated 8-person basic crew consisting of the Head Carpenter, Assistant Carpenter, Flyman, Head Electrician, Assistant Electrician, Sound, Head Props, and Assistant Props.

Trucks are unloaded to the sidewalk by Teamsters, with the number of teamsters determined by truck size. Attractions must make arrangements for the Teamster call with the NYCC Technical Director.

LOAD-IN AREA

The main load-in access is an inclined (no steps) 40'-0" (12.19m) indoor ramp from 56th Street to the stage. Trucks can park on 56th street and equipment can be unloaded to street level (NYCC has one truck ramp), then to stage via the ramp. Ramp door dimensions are 5'-6" (1.68m) wide by 9'-6" (2.90m) high.

There is also a loading door on 56th Street 5'-6" (1.68m) above sidewalk level, but trucks cannot back up to it as they will block the street and sidewalk. Objects can be lifted up and passed in. The loading dock door is arched and is 8'-0" (2.44m) wide by 12'-0" (3.66m) high at center.

NEW YORK CITY CENTER *Technical Information*

CARPENTRY

Stage Dimensions

Proscenium Opening	45'-0" (13.72m) wide x 26'-6" (8.08m) high
Standard Opening	Approximately 40'-0" (12.19m) wide x 23'-0" (7.01m) high
Depth	42'-7" (12.98m) – US smoke pocket to US wall
Grid Height	59'-9" (18.21m) (12" Flat Truss Pipes, max out trim to top chord 57'-9" Max out trim to bottom chord 56'-9")
Wing Space	Stage Right wing space extends 39'-0" (13.72m) beyond proscenium edge. There is a 30'-0" x 45'-0" (9.14m x 13.72m) clear floor area with a clear ceiling height of 27'-0" (8.23m). See attached stage plan for location of obstructing columns. Stage Left wing space extends 7' (2.13m) beyond proscenium edge. Fly rail is operated from the floor SL.
Stage Height	3'-4" (1.02m) above house floor at first row of Orchestra section.
Crossover	Hallway runs from USR to USL behind stage area. Onstage crossover is possible, between last line set and upstage wall approximately 3'-0" (.91m) wide with minor obstructions from pipes on back wall. An under stage crossover is also available via a spiral staircase.

Stage Floor

Stage is multi-layer basket weave sprung floor. Stage and wings are covered with a permanent black plywood floor. Black Harlequin marley dance floor is available upon request should it be necessary. If screwing or lagging into the deck is desired or if you have other flooring needs, please consult with Technical Director.

Orchestra Pit Lift

The orchestra pit is 45'-0" (13.7m) wide by 11'-7" (3.6m) deep at center. The pit floor is comprised of a motorized platform that is 43'-6" (13.26m) wide by 11'-7" (3.6m) deep at center and (2) fixed plugs on either side. The motorized platform can be raised or lowered between stage level and 8'-4" (2.54m) below stage level. The fixed plugs can be legged at various heights. There is space for additional musicians that extends 11'-5" (3.48m) US, under the stage with clearance. This additional space is at the same height as the platform at its lowest level. The orchestra pit floor can also be set to accommodate additional house seating. Consult with the Technical Director for further information.

NEW YORK CITY CENTER *Technical Information*

House Drapery

House Curtain		Wine-colored, guillotine only curtain, manually operated from SR; center split allows paging.	
Split Black	(1)	2-piece Black Drop	60'x30'
Borders	(6)	Black Borders	50'x12'
	(2)	Black Borders	50'x2'-6"
Legs	(6)	Black Legs	13'x30'
	(4)	Black Legs	13'x35'
	(2)	Black Legs	5'x35'
Scrim	(3)	Black Scrim	50'x30'
	(1)	Blue Bobbinette Scrim	50'x30'
	(1)	Blue Scrim	50'x30'
	(1)	White Scrim	50'x30'
	(1)	Off White Scrim	50'x30'
Full Stage Black	(3)	Full Black Drop	50'x30'
	(1)	Fiber Optic Star Drop	50'x30'
Other House Drapery	(1)	Plastic RP Screen	50' w x 30' h (15.24m x 9.14m)
	(1)	White Muslin Bounce	50' w x 30' h (15.24m x 9.14m)
<i>Note: This is not seamless and not suitable for backing by itself.</i>			

Other misc. black masking goods that may be available. Please contact the Technical Director.

Show Scenery	Scenery brought in by an attraction must be flame proofed to meet NYC Fire Department regulations. Please submit copies of current flameproof certification to the Technical Director at least 2 weeks prior to load in.
---------------------	--

NEW YORK CITY CENTER *Technical Information*

Line Set Data

Working Heights High trim 57'-9" (17.60m) to top chord of 12" flat truss pipes
High trim 56'-9" (17.60m) to bottom chord of 12" flat truss pipes
Deck to underside of sprinklers just below grid: 59'-0"
Low trim 5'-4" (1.63m) to top chord of truss pipes
Low trim 4'-4" (1.32m) to bottom chord of truss pipes

Total Line Sets (91) single purchase counterweight

Arbor Capacity 800 lbs. (362.9 kg) per arbor (20 Lead weights)

Length of Pipes 50'-0" (15.24m)

Note: *Line Sets 89-91 are 48'-0" (14.63m) and not centered. They are 2'-0" (0.61m) shorter on the SR side due to theater architecture.*

Diameter of Pipes 1.5" (3.8cm) ID (2" (5cm) OD) sched 40 steel pipes on top and bottom of 12" Flat Truss

Pin Rail Locking rail for counterweight sets located on the floor SL. Loading bridge located on SL gallery.
Pin rail for spotted hemp sets available SL and SR on galleries.

Available Weight 9,421 lbs. (4,282.3 kg) of Steel counterweight
9,670 lbs. (4,395.5 kg) of Lead counterweight
Total of 19,091 lbs. (8,677.7 kg)

Line Plot Available separately.

Note: *Electrics may need (2) line sets married together for counterweight capacity.*

Shop Area

There is a small wood working shop under the SR wing area that is accessible via freight elevator.

Storage

SR wing space.

Platforms

Various sizes available; list available upon request.

Chain Motors

(8) 1-ton CM - chain motors available for use over stage.

NEW YORK CITY CENTER *Technical Information*

LIGHTING

Power	(2) 120/208V 3 phase 5-wire 400A/leg switches located DSR; total 800A @ 120V feeding stage dimmers system and company switches								
Dimmers	672 @ 20 amp; 24 @ 50 amp (lighting system is dimmer per circuit)								
Control	ETC EOS control console with back up and misc. video nodes and designer tech table screens. Located in booth in the Rear Mezzanine. ETC Net throughout building with network to DMX nodes available.								
House Lights	Separate Paradigm system, dimmable at light board location.								
Circuits	<p>Over stage circuiting system is a flexible arrangement of multi-cable and breakouts running primarily from SR gallery.</p> <p>Front of house (FOH) positions are wired with permanent circuits: 36@20 amp and 3@50 amp on Balcony rail; 36@20 amp and 3@50 amp on Grand Tier (low) rail; 18@20 amp and 1@50amp each in box booms left and right.</p> <p>All connectors are 3-pin stage connectors.</p>								
FOH Transfer	84 FOH 20 amp and 8 @ 50 amp FOH circuits are accessible by transfer panel located DSR. All connectors are 3-pin stage connector.								
FOH Positions	<p>Throw length/angle to head-height of a 5'-6" (1.68m) person standing at plaster line on center:</p> <table><tr><td>Balcony rail (Upper Rail) center</td><td>55' (16.76m)/29°</td></tr><tr><td>Grand Tier/Mezzanine rail (Lower Rail) center</td><td>32' (9.75m)/9°</td></tr><tr><td>Box booms left and right top</td><td>38' (11.58m)/23°</td></tr><tr><td>Follow spot booth</td><td>114' (34.75m)/34°</td></tr></table>	Balcony rail (Upper Rail) center	55' (16.76m)/29°	Grand Tier/Mezzanine rail (Lower Rail) center	32' (9.75m)/9°	Box booms left and right top	38' (11.58m)/23°	Follow spot booth	114' (34.75m)/34°
Balcony rail (Upper Rail) center	55' (16.76m)/29°								
Grand Tier/Mezzanine rail (Lower Rail) center	32' (9.75m)/9°								
Box booms left and right top	38' (11.58m)/23°								
Follow spot booth	114' (34.75m)/34°								
FOH Instruments	FOH instruments may be moved during load-in but must be restored at load-out.								
	Balcony Rail (Upper Rail) <ul style="list-style-type: none">(30) ETC Source Four 19° with color extenders(20) ETC Source Four 10° (Barrels only)(24) ETC Source Four 14° (Barrels only)								
	Grand Tier/Mezzanine Rail (Lower Rail) <ul style="list-style-type: none">(2) ETC Source Four Par WFL, L106 (curtain warmers)(2) ETC Source Four Par MFL, L106 (curtain warmers)								
	Box Booms <ul style="list-style-type: none">(8) ETC Source Four 19° (4 each left and right) with color extenders(20) ETC Source Four 26° (10 each left and right) with color extenders								

NEW YORK CITY CENTER *Technical Information*

Stage Instruments	(45)	ETC Source Four 19°	
	(115)	ETC Source Four 26°	
	(135)	ETC Source Four 36°	
	(40)	ETC Source Four 50°	
	(18)	8" 1500W Altman Fresnels	
	(18)	6.9" ARRI Studio Fresnels 1000W	
	(70)	PAR64 1000W w/ various VNSP, NSP, MFL, WFL lamps	
		<i>(Contact the Technical Director for current lamp stock.)</i>	
	(15)	ETC Source Four PAR w/ VNSP, NSP, MFL, WFL lenses	
	(8)	PAR 64 MFL 500W 9 light, 3 circuit striplights 7'-2" (2.18m)	
	(10)	R40 300W FL 15 light, 3 circuit striplights 8'-0" (2.44m)	
	(10)	Altman FarCyc units 1000W, 3 circuit 4'-5" (1.35m)	
	(8)	MR 16 EYC (flood) 75W 30-light, 3 circuit striplights 6'-6" (1.98m)	
	(12)	ETC MultiPAR-12 Strips 575W 12-light, 3 or 4 circuit striplights 8'-6" (2.45m) w/ VNSP, NSP, MFL, WFL lenses and flipper	
	(4)	ETC MultiPAR-3 Strips 575W 3-light, 3 circuit striplights 2'-4" (0.71m) w/ VNSP, NSP, MFL, WFL lenses and flipper	
	(5)	9'-4" (2.84m) T-3 500W 12-light 3 circuit Ground Row striplights	
Footlights		Apron trough can accommodate (5) MR 16 strips	
Followspots	(3)	3000W Xenon Lycian 1293 in Spot Booth (back of 2nd balcony)	
Color Frame Sizes		ETC Source Four 10°	12" x 12" (30.5cm x 30.5cm)
		ETC Source Four 14°	7.5" x 7.5" (19.05cm x 19.05cm)
		ETC Source Four 19°-50°	6-1/4" x 6-1/4" (15.8cm x 15.8cm)
		8" Fresnel	10" x 10" (25.4cm x 25.4cm)
		6.9" ARRI Fresnel	9" (22.9cm) diameter circle
		PAR 64	10" x 10" (25.4cm x 25.4cm)
		PAR 64 strip	8 3/4" x 9 1/2" (22.2cm x 24.1cm)
		R40 strip	5 3/4" x 6 3/4" (14.6cm x 17.1cm)
		Far-Cyc	15 1/2" x 16" (39.4cm x 40.6cm)
		Followspot	9" (22.9cm) diameter circle
		MR16 Strip	3 1/4" x 4 3/4" (8.3cm x 11.9cm)
		ETC MultiPAR Strip	7 1/2" x 7 1/2" (19.05cm x 19.05cm)
		T-3 Ground Row Strip	8 3/4" x 13" (22.25cm x 33cm)
Ladders & Lifts	(2)	Genie-lift, reaches 40' (12.19m)	
	(1)	12' ladder, fiberglass	
	(2)	8' ladders, fiberglass	
	(4)	6' ladders, fiberglass	
	(2)	4' ladder, fiberglass	
	(4)	3' ladder, aluminum	

NEW YORK CITY CENTER *Technical Information*

Booms	(8)	16'-0" (4.9m) boom towers. Each tower will hold ten (10) ETC Source Four units on 19" (48.3 cm) centers. An eleventh (11) unit may be mounted on top. Each tower consists of two sections. A single section may be used as an 8'-0" (2.4m) tower.
	(6)	Rolling stands, adjustable from 5'-0" (1.83m) to 8'-0" (2.74m)
	(4)	Rolling stands, adjustable from 3'-0" (1.10m) to 5'-0" (1.83m)
	(8)	50 lb. bases (1 1/2" pipe)
	(7)	25 lb. bases (1 1/2" pipe)
		1-1/2" pipe, couplings, and cheseboros available for 4'-0" (1.2m) to 21'-0" (5.5m)
		booms, goal posts, etc.
Sidearms	(60)	12" (30.5cm) single-tee
	(50)	18" (45.7cm) single-tee
	(4)	24" (61.0cm) single-tee
Other Hardware	(29)	24" (61.0cm) diameter full bumpers
	(2)	Half bumpers
	(59)	Hanging irons for striplights
	(36)	Trunions (26 for cyc and Par strips, 10 for MR 16 strips)
	(20)	Barndoors for 8" Fresnels or PAR 64
	(18)	Arri barndoors for Arri Fresnels
	(100)	Source 4 color extenders
	(31)	Half hats
	(20)	10° top hats
Cable		Approximately 4000' available in various lengths.
Pyrotechnics & Open Flame		Any use of pyro or open flame, cigarettes, flash paper, flash pots, etc. requires a permit from the NYC Fire Department. At least three weeks notice prior to load in is required to get the proper permit. Please consult with your Production Contact for more information. FDNY fee applies.

NEW YORK CITY CENTER *Technical Information*

SOUND

Mix Location	Sound Mix position located in rear center of the orchestra level seating section. The house Studer sound console is not movable. Contact the Technical Director if a road console position is required.		
Mixing Consoles	Studer Vista 5 Digital Mixing Console (42 fader) 568 in x 472 out; analog and digital with Dante interface TiMax Sound Hub II system matrix 48 x 48		
Production Communication	Six-channel Clearcom system hard wired to all production areas. (Dual power supplies) (8) HME Pro 850 wireless intercom (8 wireless belt packs) (4) Clear-com RM-440 4 channel remote stations (6) 2 channel belt boxes RS 502 (10) Single channel belt boxes RS501 (24) Headsets (Beyer DT108 / Telex PH-88) (4) Speaker Stations (3) Clearcom HS-6 Handset (1) TW-12B interface (1) TW-40 Radio interface (1) CC-22 8 channel RTS to Clearcom interface		
<u>FOH Speakers</u>			
Center Cluster	(12)	d&b audiotechnik J12	
	(1)	d&b audiotechnik J12 SUB	
Stereo System	(6)	d&b audiotechnik C7 (Main L&R Orch)	
	(2)	d&b audiotechnik B2 (Subs L&R Orch)	
	(2)	d&b audiotechnik B4 (Subs L&R Orch)	
Delays & Under Balcony	(5)	d&b audiotechnik E6 (Orch Delay)	
	(2)	d&b audiotechnik E12 (Fill L&R Orch)	
	(14)	d&b audiotechnik E0 (L&R Mezz)	
	(2)	d&b audiotechnik T10	
	(6)	d&b audiotechnik Q1 (Balcony Delay)	
Front Fill	(5)	d&b audiotechnik E3	
Orch Fill	(2)	d&b E0 & E12	
Monitors	(6)	d&b audiotechnik E12	
	(4)	d&b audiotechnik E8	
	(2)	d&b audiotechnik M6	
	(5)	d&b audiotechnik E0	
	(3)	d&b audiotechnik D6 amplifiers	
	(3)	d&b audiotechnik D12 amplifiers	
	(6)	Hotspot speakers	
	(8)	Apogee SSM	
	(3)	Ashley 4 ch amps	
	(2)	Anchor AN1000X self powered speakers	

NEW YORK CITY CENTER *Technical Information*

Microphones	(1)	AKG D112
	(1)	AKG 414
	(2)	AKG 416 clip on
	(2)	AKG 418 clip on
	(1)	AKG 535
	(6)	AKG 451 preamps with:
		(4) with CK1 cardioid capsules
		(1) with CK5 hyper cardioid capsule
		(2) with CK9 long shotgun capsule
		(1) with CK8 shotgun capsule
	(15)	AKG blue line SE300b preamps with CK91 cardioid capsule:
		(5) with A91 Swivel
		(10) with AKG VR 92 tubes for 300b
	(1)	Audix I5
	(2)	Audix D-1
	(2)	Audix D-2
	(2)	Audix D-4
	(1)	Audix D-6
	(1)	Heil PR-31B
	(1)	AT 4050
	(2)	AT 815B Shotguns
	(1)	Barcus Berry Piano Pick-up
	(2)	Countryman Iso-Max cardioid lavalier
	(6)	Crown PCC 160
	(3)	Crown PZM 30 RB
	(2)	Crown CM700
	(5)	Electrovoice 408B
	(6)	Earthworks Flex 2-FM360, 2-FM500, 2-FM720
	(4)	Schoeps CMC6/MK4
	(2)	Telefunken M60
	(2)	Sennheiser 518
	(2)	Sennheiser K3-U preamps with:
		(1) ME40 hyper cardioid capsule
		(2) ME80 cardioid capsule
	(1)	Shure SM 57
	(6)	Shure SM58
	(6)	Shure Beta SM 57
	(6)	Shure Beta SM 58
	(4)	Shure Beta SM 87A
	(2)	Shure Beta SM 181
	(2)	Shure Beta SM 98
	(1)	Shure Beta SM 91A
	(2)	Shure 58 with switch
	(1)	Shure 408 with switch
	(7)	Active DI boxes (4 type 85, 2 Hot box, 1 J48)
	(1)	Radial JDI stereo DI box
	(2)	Astatic CTM1500
Audio Interfaces		USB, TRS, RCA DI boxes
Wireless	(2)	Sennheiser EW 550 G3 receiver
	(2)	SKM 500 me865 handheld
	(2)	Sennheiser wireless handheld EW100 (for VOG Director talkback microphone)
	(14)	Sennheiser sk5212 body pack transmitters with Sennheiser 3532 receivers (mke 2 lavs)

NEW YORK CITY CENTER *Technical Information*

Stands	(75)	MS12 Microphone stands
	(35)	MS25 Microphone stands
	(5)	Tripod Stands
	(30)	DMS10E (banquet stands)
	(6)	DMS7 (desk stands)
	(75)	Boom Arms
	****	Assorted Mic hardware
Playback	(2)	Denon CD Players C640
	(2)	Denon Media Players F300
	(1)	QLAB sound effects/playback system 8 CH
		(Redundant system of (2) Mac Minis)
Signal Processors	(2)	TC 4000 reverbs
	(4)	Lexicon FX engines internal (to Studer)
Wiring		XLR Patch panel in amp room cross connects to all audio circuits.
	(650)	Balanced XLR lines from stage & FOH positions
		W2 56 pair from FOH mix position & SR to patch room
		Analog, AES, XLR, MIDI, CAT6 lines from FOH to patch room
	(48)	UTP CAT5 4pr lines
Cable		XLR, Speakon, AC
		(Consult with the Technical Director for your specific needs)
XLR Multi		6, 12, & 19 pair (Wireworks AMP G block), W2 56 pair
Power		Company switch (sound) and house sound system powered by 400 Amps 3 phase 5 wire
		with isolated ground and in-line isolation transformer.
		Company switches:
		SR 100amp 3 phase camlock
		under stage 100amp 3 phase camlock
Hearing Assist System		4 Channel FM (RF) listening system
Paging System		Page system and show program to all backstage areas and dressing room tower.

NEW YORK CITY CENTER *Technical Information*

VIDEO

Lobby system for stage program and Digital HD content. This is an MATV/Digital sign player system of (8) HDTV monitors in the lobby spaces to display the stage picture for latecomer audience members. These monitors are also available to display other recorded content before and after shows and during intermissions.

A lobby "video art wall" is available to display content. An extra fee for the digital installation potentially applies, please contact the Technical Director.

Video/audio archive available, fee applies, please consult with the Technical Director.

Cameras	(1)	Stage picture Sony model BRC-2700 (HD3CMOS Stage View)
	(1)	IR Stage Picture
	(1)	Sony B& W #SSCM183
	(1)	Elmo PTZ Camera
Monitors	(2)	20" LCD hung on Mezz rail for conductor picture for actors
	(2)	15" Sony ViewSonic (MATV) at Stage Manager's desk
	(1)	22" Sony HD LCD (MATV) at Stage Manager's desk
	(1)	8" Sony Color CRT for conductor picture at Stage Manager's desk
	(1)	17" LCD (for lighting cue sheet) at Stage Manager's desk
	(1)	42" Sony HD Projection TV (MATV) in Green Room
	(2)	9" Panasonic B&W CRT
	(1)	9" Sony Color CRT
	(2)	13" Sony Color CRT
	(1)	27" Sony Color CRT
(MATV monitors can receive Stage SD [Standard Definition], Stage HD, Stage IR, Conductor, Truck Feed)		
Video Feeds	(80)	Video lines to and from orchestra and mezzanine lobbies, stage positions, orchestra pit, sound booth, lighting booth, follow spot booth, mezzanine and balcony rails, and trap in 56 th Street sidewalk for truck hookup.
Playback/Record	(1)	Panasonic DMR-E100H DVD video recorder
	(1)	Panasonic DVD-S53 DVD/CD multi format player
Cables to Sidewalk	(13)	TRIAx to under stage
	(1)	DT12 12 pair audio mults to audio patch room
	(20)	BNC HDSDI video lines to under stage
	(8)	CAT6 data lines to audio patch room
	(1)	25 pair Telco line to telephone room

Dark fiber is available in an adjacent building through Verizon. There are eight HDSDI video lines and two 12-pair AES audio XLR multis run from the understage area to the Verizon room. Contact the Technical Director for more information.

NEW YORK CITY CENTER *Technical Information*

PROPS

Ballet Barres	(3)	Ballet barres 10'-0" long
Harlequin Cascade (Blk)	(6)	Panels 6'-7" (2m) x 42'-0"
Chairs	(8)	Tall Stools (30")
	(8)	Medium Stools (24")
	(8)	Short Stools (18")
	(30)	Folding chairs available
	(90)	Black Fabric Upholstered chairs
Folding Tables	(1)	8'-0"
	(10)	6'-0"
	(4)	5'-0"
	(4)	4'-0"
Stands	(50)	Music stands
Stand lights	(80)	Stand lights; dimmers available
Podium	(1)	Conductor's podium and stand, adjustable and lit
Platforms		Assorted small platforms
Lecterns	(2)	Dark Cherry Wood lecterns, non-adjustable
Pianos	(1)	Yamaha U5PE Upright Piano
	(1)	Yamaha 7ft CF6 Grand Piano

NEW YORK CITY CENTER *Technical Information*

WARDROBE

Wardrobe Area	Separate wardrobe room located on the 2 nd floor. (2) Irons (2) Ironing boards (2) Steamers (1) Sewing Machine (4) Washers and dryers and (1) large sink located in the laundry room on the 2 nd floor across from the wardrobe room (20) 6' (1.83m) high x 7' (2.13m) long rolling racks
Quick Change Booths	Quick change booths set up as needed. (Limited space available SL, check plan drawing.)

NEW YORK CITY CENTER *Technical Information*

MANAGEMENT

Production Room	Various dressing rooms, the Green Room, the Wardrobe area, and other possible production office spaces are equipped with phone jacks and network lines. Please consult with the Technical Director if you wish to utilize any phone lines.
Green Room	Green Room is located on the 3 rd floor of the dressing room tower.
Stage Manager's Desk	Located DSR with four video monitors (displaying stage, conductor, IR stage, and light board display), intercom system, paging microphone, and cue light switches. House curtain is also operated from DSR.
Rehearsal Rooms	Rehearsal studios are available but must be scheduled in advance with the Production & Rentals Assistant.
Restrooms	Restrooms and showers available on every level of the dressing room tower. There is one handicap accessible unisex restroom located in the crossover hallway backstage.

NEW YORK CITY CENTER *Technical Information*

DRESSING ROOMS

Dressing Rooms are located on floors 2 through 6 of the backstage tower, off stage left.

Floors 2 through 5 each have (3) small star dressing rooms which hold 2 to 4 people each. Large chorus dressing rooms are on the 2nd floor and the 6th floor. Total dressing room space available for approximately 80 people.

Access to dressing rooms is available by both stairs and an elevator.

There is additional dressing space and lockers for 45 musicians in a room under the stage accessible to the Orchestra Pit, called the Robing Room. See mini-ground plans at the end of this document.

NEW YORK CITY CENTER *Technical Information*

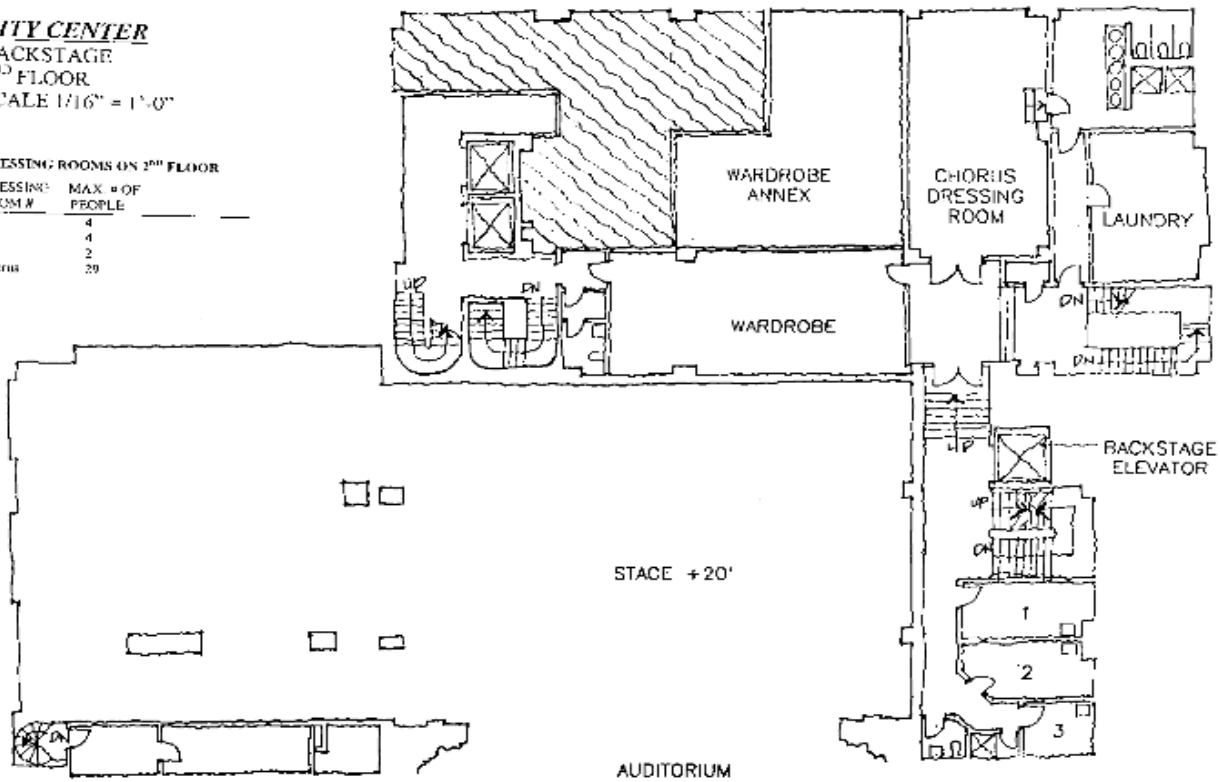
Dressing Rooms on 2nd Floor:

Room #	Max # People
1	4
2	4
3	2
Chorus Room	29

CITY CENTER
BACKSTAGE
2ND FLOOR
SCALE 1/16" = 1'-0"

DRESSING ROOMS ON 2ND FLOOR

DRESSING ROOM #	MAX # OF PEOPLE
1	4
2	4
3	2
Chorus	29



NEW YORK CITY CENTER *Technical Information*

Dressing Rooms on 3rd Floor:

Room #	Max # People
4	4
5	4
6	2

CITY CENTER

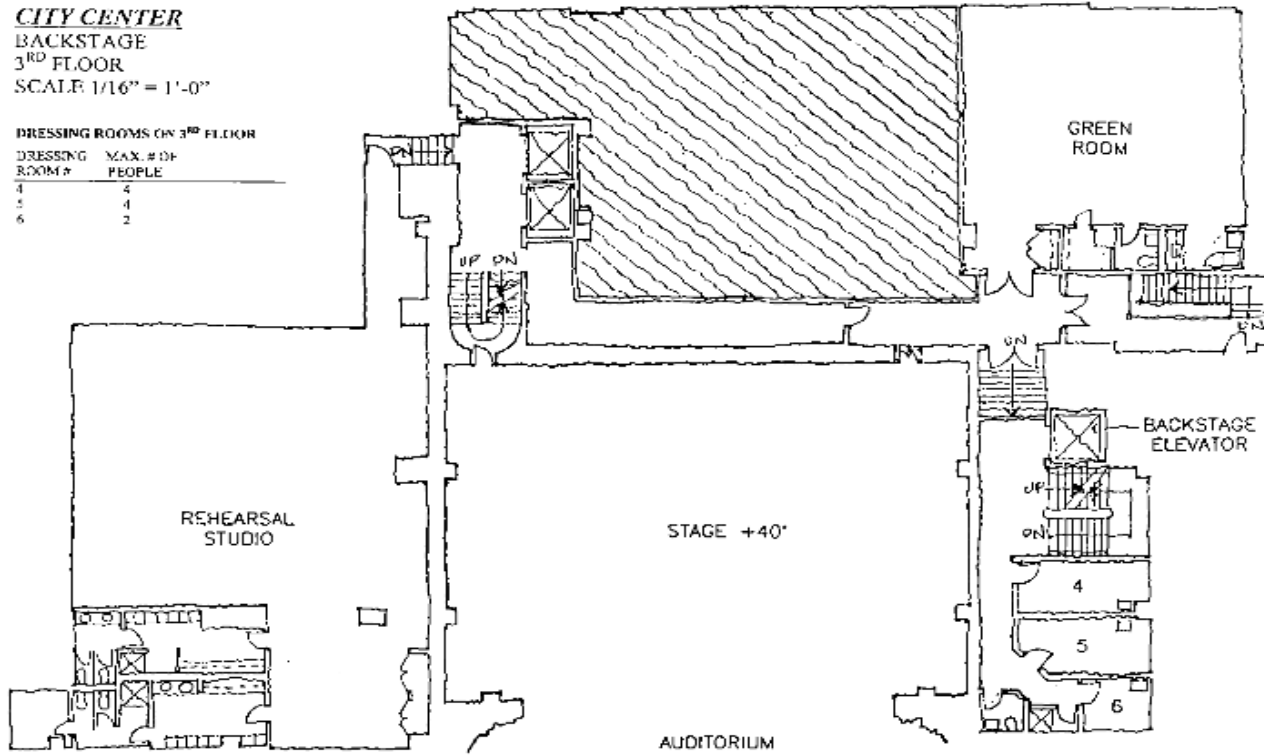
BACKSTAGE

3RD FLOOR

SCALE: 1/16" = 1'-0"

DRESSING ROOMS ON 3RD FLOOR

DRESSING ROOM #	MAX. # OF PEOPLE
4	4
5	4
6	2



NEW YORK CITY CENTER *Technical Information*

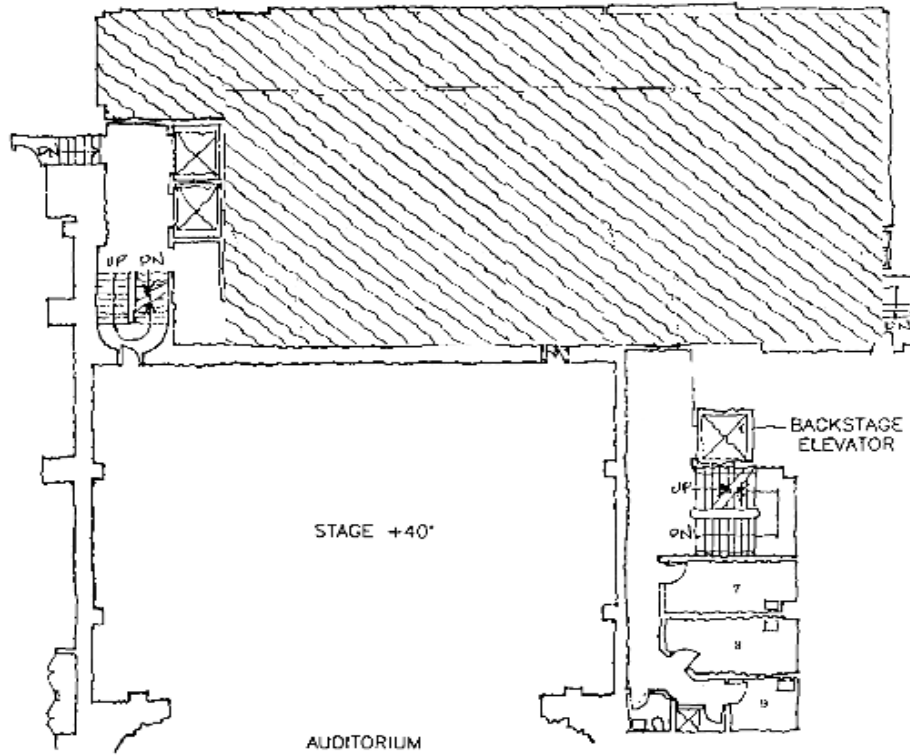
Dressing Rooms on 4th Floor:

Room #	Max # People
7	4
8	4
9	2

CITY CENTER
BACKSTAGE
4TH FLOOR
SCALE: 1/16" = 1'-0"

DRESSING ROOMS ON 4TH FLOOR

DRESSING ROOM #	MAX. # OF PEOPLE
7	4
8	4
9	2



NEW YORK CITY CENTER *Technical Information*

Dressing Rooms on 5th Floor:

Room #	Max # People
10	4
11	4
12	2

CITY CENTER

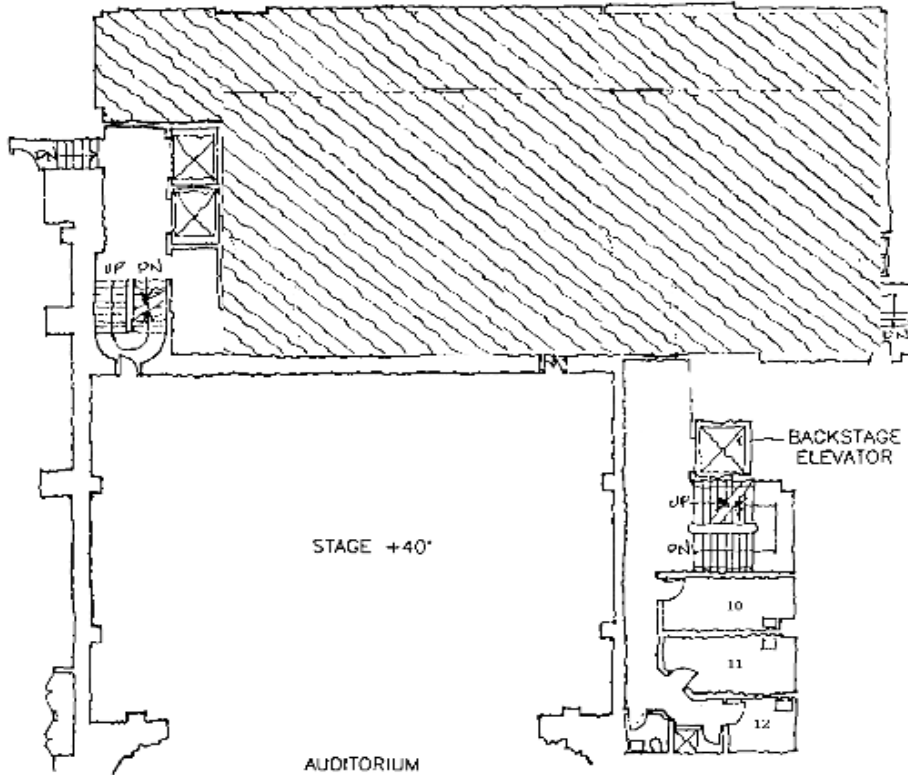
BACKSTAGE

5TH FLOOR

SCALE 1/16" = 1'-0"

DRESSING ROOMS ON 5TH FLOOR

DRESSING ROOM #	MAX. # OF PEOPLE
10	4
11	4
12	2



NEW YORK CITY CENTER *Technical Information*

Dressing Rooms on 6th Floor:

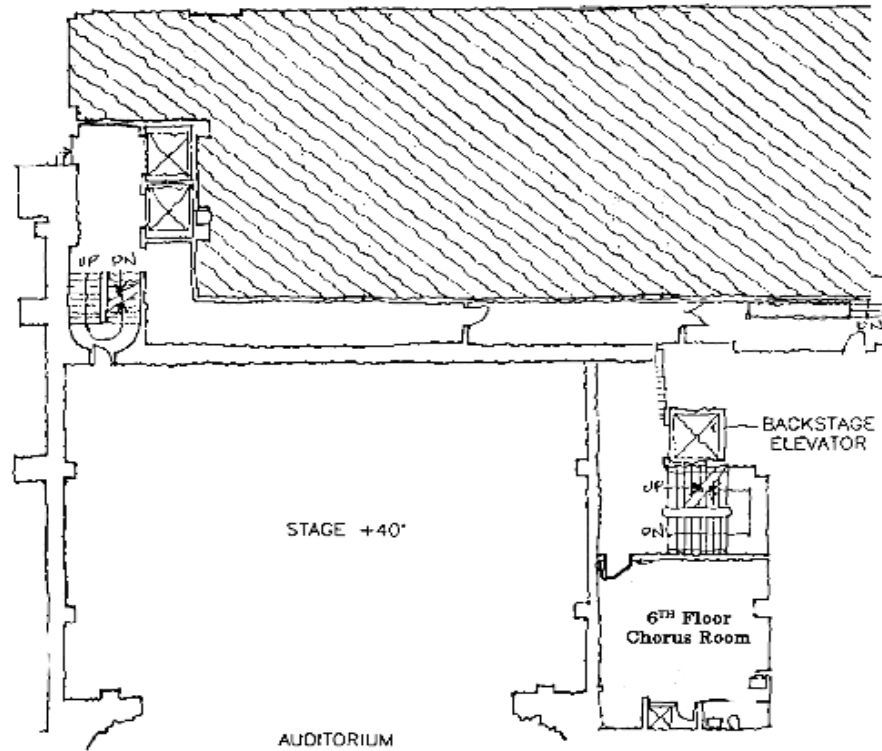
Room #	Max # People
Chorus Room	15

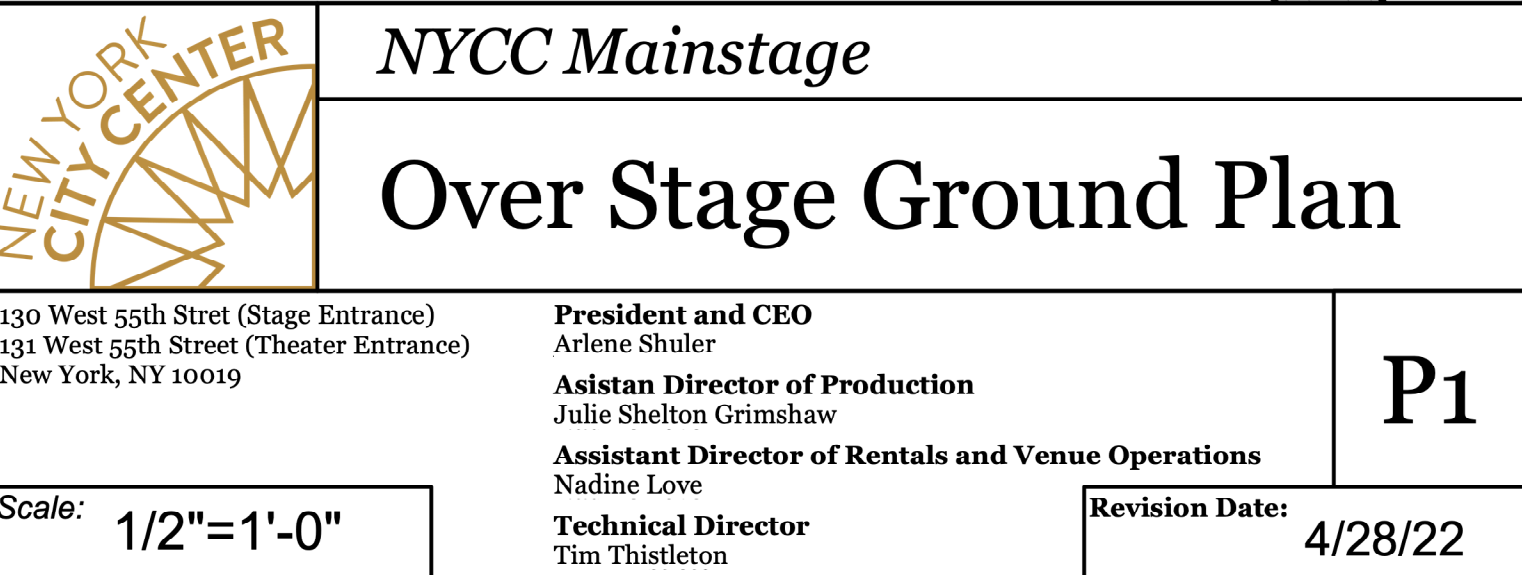
CITY CENTER
BACKSTAGE
6TH FLOOR
SCALE 1/16" = 1'-0"

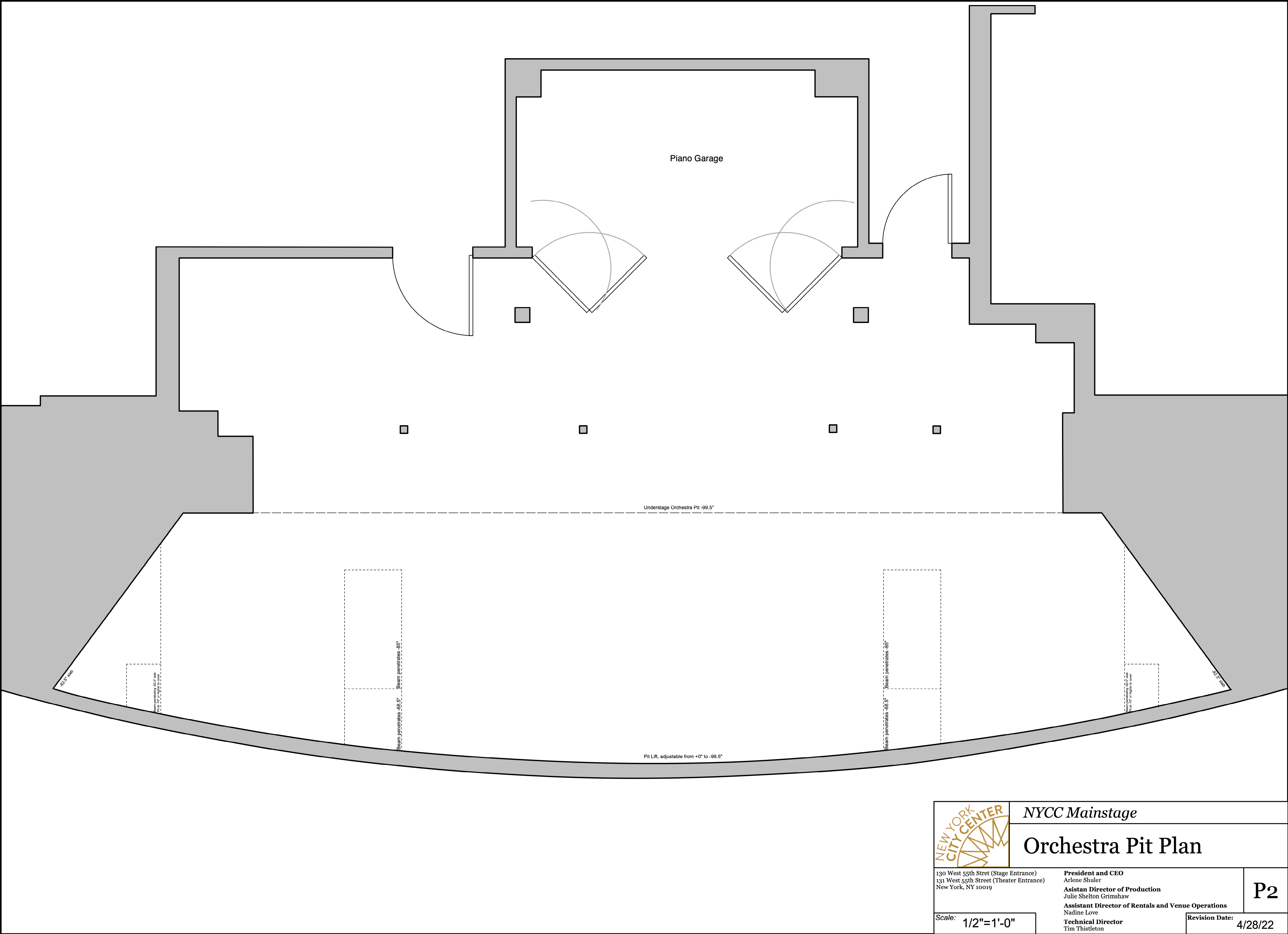
DRESSING ROOMS ON 6TH FLOOR


DRESSING ROOM #	MAX. # OF PEOPLE
-----------------	------------------

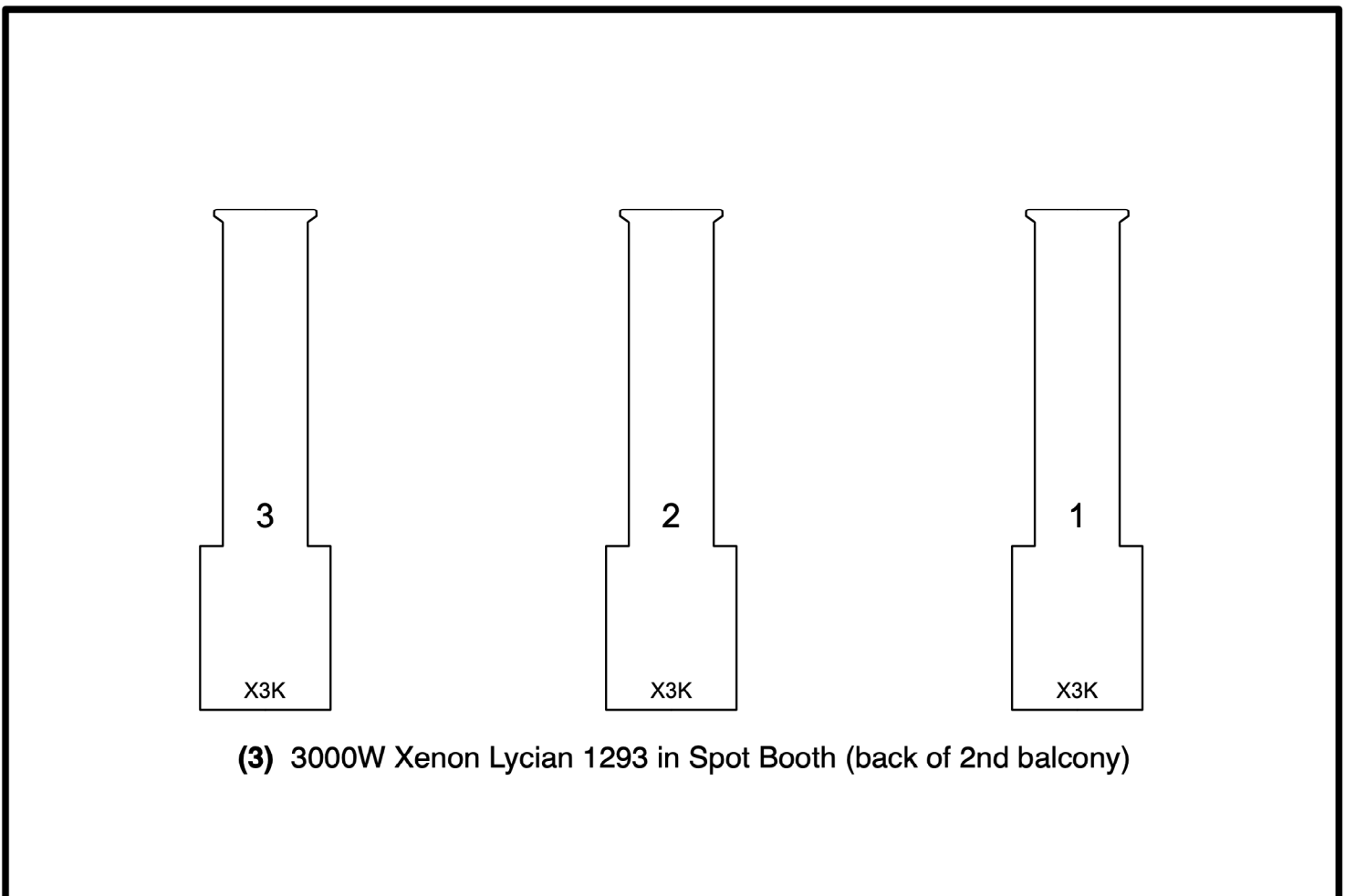
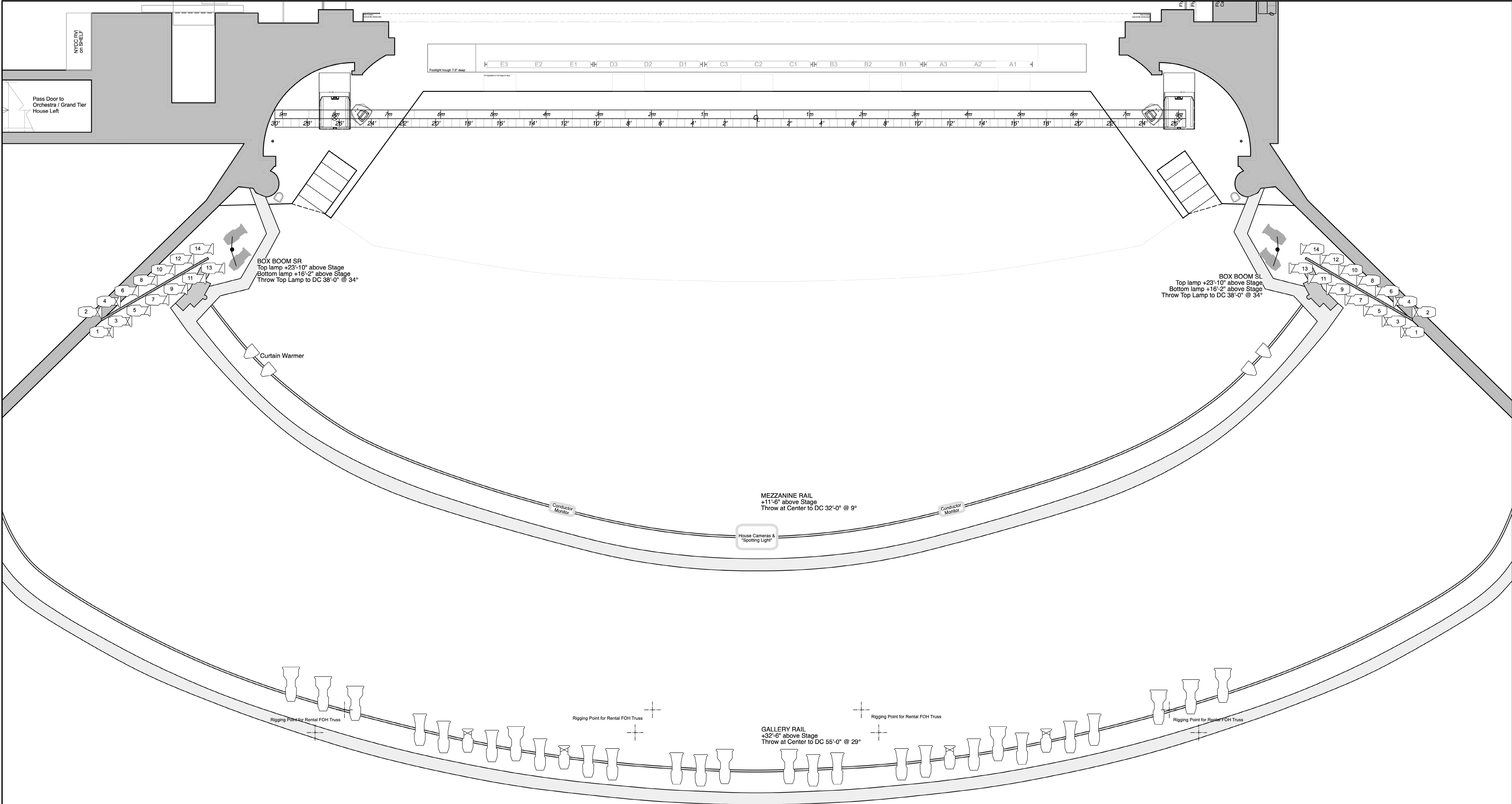
THE 6 TH FLOOR	15 people
Chorus Dressing Room	

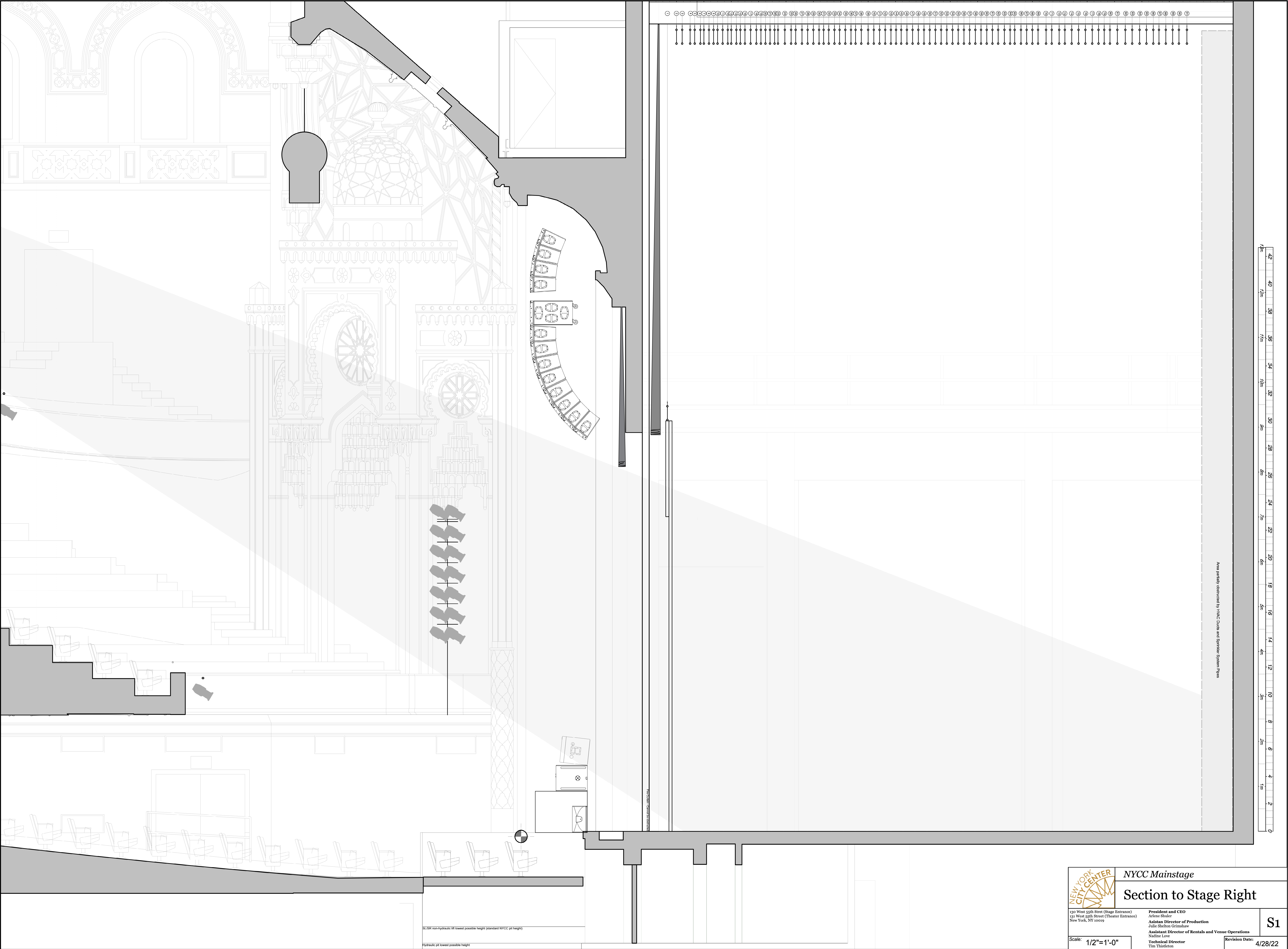


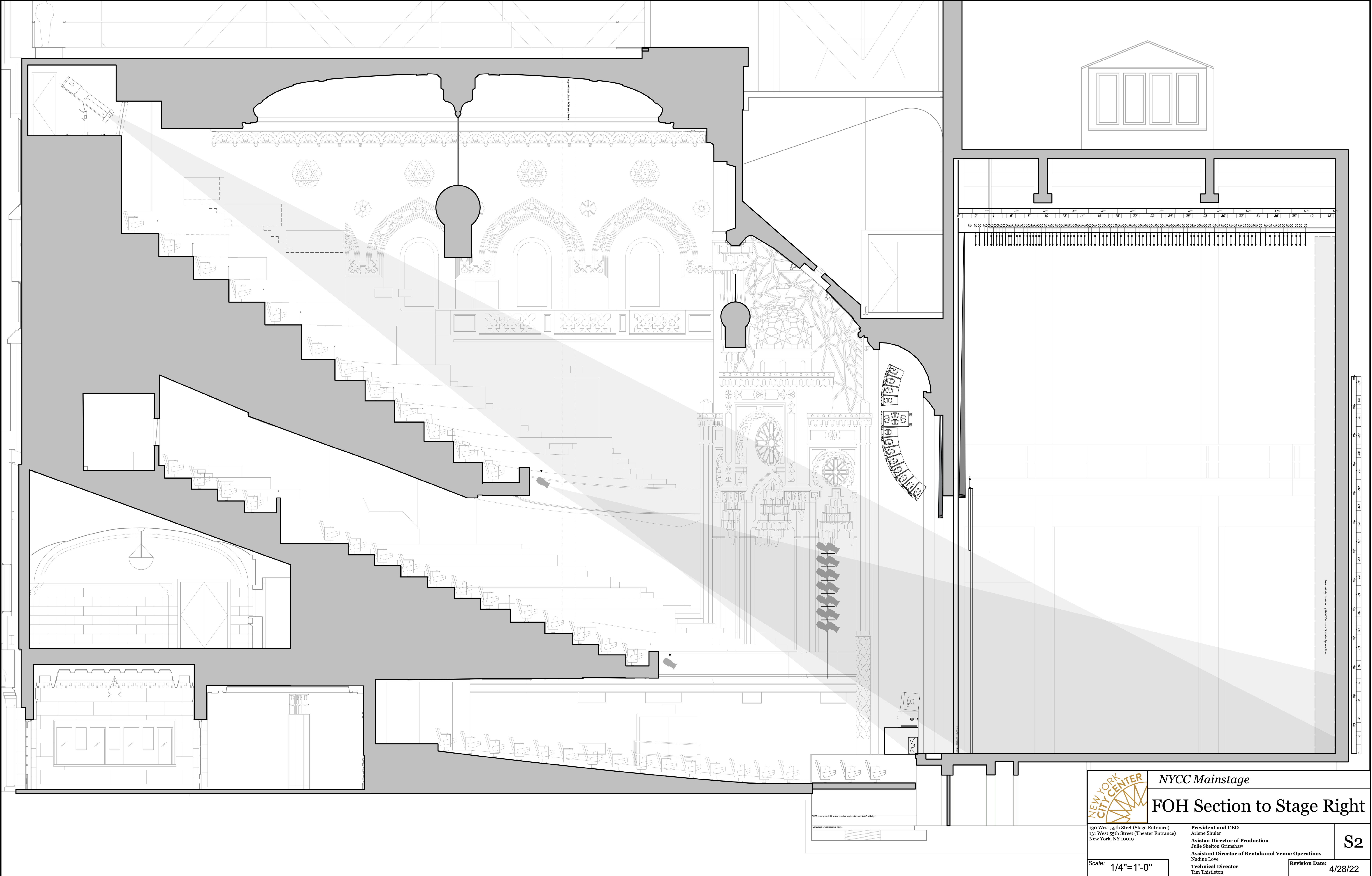




	NYCC Mainstage	
	Orchestra Pit Plan	
	<div>130 West 55th Stret (Stage Entrance) 131 West 55th Street (Theater Entrance) New York, NY 10019</div> <div>Scale: 1/2"=1'-0"</div>	<div>President and CEO Arlene Shuler</div> <div>Asistan Director of Production Julie Shelton Grimshaw</div> <div>Assistant Director of Rentals and Venue Operations Nadine Love</div> <div>Technical Director Tim Thistleton</div>







NYCC Mainstage

FOH Section to Stage Right

130 West 55th Street (Stage Entrance)
131 West 55th Street (Theater Entrance)
New York, NY 10019

President and CEO
Arlene Shuler
Asistan Director of Production
Julie Shelton Grimshaw
Assistant Director of Rentals and Venue Operations
Nadine Love
Technical Director
Tim Thistleton

Scale: 1/4"=1'-0"

Revision Date: 4/28/22

S2